



The Datum Post

eNews of the



Representing Prospectors
Since 1904

this issue

Presidents Report **P.3**

APLA positions vacant **P.4**

Industry news **P.5**

Phone coverage **P.10**

20 years since the Battlers Bill **P.13**

DO

Remember safety in the bush is paramount, make sure your radio, GPS and PLB are working correctly before venturing out.

**Wishing all members,
a Merry Xmas and a
Happy New Year.**



APLA ASSOCIATION CONTACT DETAILS:

State Delegates- admin

President. James Allison pres@apla.com.au
Secretary. Steve Palmer sec@apla.com.au
Treasurer. Marise Palmer treas@apla.com.au

Branch Officers of APLA

Perth Branch

President. Greg Young perpres@apla.com.au
Secretary. Sue. McKenna persec@apla.com.au
Treasurer. Brad Mitchell pertres@apla.com.au
Delegates James Allison, Marise Palmer, Steve Palmer

Albany Branch

President. Gerry.Gregson albanypres@apla.com.au
Secretary. Michael McCaffery albanysec@apla.com.au
Treasurer. Bruce Smith albanytres@apla.com.au
Delegates Noeleen Smith, Gerry Gregson

Goldfields Branch

President. Tim Bates goldfieldspres@apla.com.au
Secretary. Robert Laing goldfieldssec@apla.com.au
Treasurer. Annie Laing goldfieldstreas@apla.com.au
Delegates Julie Bradley, Ziggy Wolski, Lindsay Stockdale

Mandurah Branch

President. Alan.Branchi manpres@apla.com.au
Secretary. Bob.Wilson mansec@apla.com.au
Treasurer Amanda Holmes mantres@apla.com.au
Delegates John Krokosz

Southwest Branch

President. Tom Cousins swpres@apla.com.au
Secretary. Judith.Smith swsec@apla.com.au
Treasurer. Jo Barber swtres@apla.com.au
Delegates Judith Smith, David Birch

APLA is made up of individual members in 5 Branches throughout the State of WA.

It can only run as effectively as its input from those members.

Volunteers are needed for the position of Technical Adviser and Datum Post Editor.

If you feel you have the qualifications to fill one of these positions call sec@apla.com.au.



**APLA
NEEDS
YOU**

From the President's Desk, Dec 2021

During the recent 1/4ly catchup meeting with DMIRS senior management on Tuesday 29th November 2021 a number of issues were raised and discussed in detail.

The Code of Cooperation with the Pastoralists and Graziers Association was tabled and APLA made it very clear to all attendees that APLA wouldn't agree to the proposed Code of Cooperation. APLA pointed out that APLA has a Code of Conduct and its members are required to follow the Code. APLA pointed out that it would be desirable if PGA had a similar Code. DMIRS suggested APLA meet with PGA and discuss whether a Code could be introduced to their members.

DMIRS was questioned why the Miner's Right handouts regarding prospecting have been changed to exclude the wording "Prospecting for Gold" DMIRS offered no convincing explanation but took the issue on notice to further investigate and report. APLA explained it was important that first time prospectors, on issuance of a Miner's Right, should be given correct and clear information regarding their rights. APLA will follow up on this issue.

APLA raised the issue of misinformation coming from DMIRS's front counter in the Perth office and gave an example of a costly exercised undertaken by an APLA member. APLA suggested DMIRS undertake proper front counter training for all staff to ensure the information being provided is correct and not ambiguous and that the front counter staff have appropriate people management skills.

APLA raised the issue of the proposed diversification lease, which is a conversion from a pastoral lease to allow pastoralists to introduce another revenue stream other than grazing. APLA noted that carbon farming, wind and solar farms, home stay enterprises, improved pasture and fodder production are the typical activities which would come under the diversification lease. APLA raised concerns regarding access to these areas for both prospectors and tenement holders. DMIRS suggested a direct approach to the Department of Planning, Lands and Heritage for further clarification.

APLA showed examples of DMIRS pamphlets/ small booklet on prospecting in WA and requested DMIRS to continue to make hard copies available. APLA highlighted the need to educate new prospectors on where to go and what is required from them.

It's been a very interesting year with several changes to the management of APLA including the resignation of our life member Les Lowe and the handover of the treasurer from our life member Kurk Brandstater.

I would like to take this opportunity to wish all APLA members a Merry Christmas and a Happy New Year. May 2022 be the year that you find the big nugget we all dream about.

James Allison

APLA President

EDITORIAL

Steve Palmer. Editor

Contact: **0498353232**
aplanews@apla.com.au



The last few months have been very busy for the State Executive.

The AGM in September where a new President was elected, namely James Allison from Sandstone. A leaseholder with great experience and knowledge of the gold mining industry,

A new State Secretary was elected.

A new State Treasurer, Marise Palmer as Kurk Brandstater has relinquished his position.

Les Lowe due to ill health has resigned from APLA as TA, Vice President and Mandurah delegate. Les was given honorary Life Membership as was Kurk Brandstater

We have the Aboriginal Heritage Bill in the WA parliament for its third reading and a concerted effort has been made by the Executive in face-to-face meetings with DPLH, DMIRS and Ministerial staff to express our concern with this bill. Also serious lobbying of members of the Legislative Assembly and Upper House to vote with their consciences on the bill not necessarily on party lines

Membership renewals sent out and membership cards are now being processed. If you have received a renewal notice pay via PayPal online ASAP so you receive your cards for 2022 early as possible.

Already in the past couple of weeks Executives from APLA have had to attend a number of DMIRS meets, namely RICC meeting (Resource Industry Consultative Committee) Quarterly Catch Up, and a meeting at Dumas House re the Aboriginal Heritage Bill.

Any support APLA Executives can get from our members is appreciated. So, saying this, it leads me onto our next topic.

APLA have two very important positions vacant. Please read the next column and assess whether you may be suitable for either vacancy.

From the Editors Desk

Positions Vacant

Technical Advisor

APLA is on the lookout for a person or persons involved in gold mining or recently retired to fill this position. The role involves nothing more than offering solid technical advice to prospectors. Face to face meetings with stakeholders and Government.

A subcontract will be looked at and phone is supplied. Most queries can be dealt either by phone or email.

The APLA Executive fields many questions involve pegging, leases and even issues involving the Wardens Court procedures, These questions need to be directed to a qualified person involved or has had experience in the industry.

If you feel this could be of interest or need further information, please call the APLA secretary on 0498 353 232 or email sec@apla.com.au

The Datum Post Editor

The current editor of the Datum Post is moving on. Are there any aspiring authors, editors, or writers out there who would like the position of Editor?

The person filling the position is paid an honorarium, is given pretty much a free hand on content and great support from members regarding input of articles.

The Datum Post is now an E news magazine therefore layout etc. is set and formulated on a computer, no longer sent to printers for publishing. The current editor is more than happy to help and support to the new applicant.

There are 6 issues a year the first issue being February and then every 2 months after.

We have a resident photographer who helps with photos of important events, AGM etc. but also provides the editor with other pictures relating to prospecting in WA.

Anyone interested in this exciting position please call the APLA secretary on 0498 353 232 or email same on

CURRENT INDUSTRY / DMIRS NEWS

Extract from DMIRS Mineral and petroleum industry activity review 2020-21

Mineral exploration expenditure in Western Australia was \$2.1 billion in 2020-21, an increase of 21 per cent from \$1.7 billion in 2019-20 and its highest level since 2012.

Growth in mineral exploration expenditure was mainly due to increased spending on gold (up \$286 million), supported by record high prices. The other notable increases in spending were for iron ore (up \$106 million) and nickel-cobalt (up \$36 million), again reflecting higher prices for these commodities.

These commodities also represented the main targets of mineral exploration in Western Australia: gold (52 per cent), iron ore (22 per cent), and nickel-cobalt (9 per cent).

Spending on gold exploration in Western Australia surpassed \$1 billion for the first time in history, while iron ore exploration (\$455 million) was at its highest level since 2013-14 and nickel-cobalt exploration (\$185 million) recorded a nine-year high.

The State's share of national mineral exploration expenditure increased to 65 per cent, highlighting that overall growth in exploration expenditure for the country as a whole was overwhelmingly due to Western Australia.

Consistent with the strong market conditions seen in the gold industry, its royalty payments rose by 15 per cent to a record \$416 million.

The number of gold projects was 53, which was the same number as in 2019-20. There were five new projects for 2020-21, as high prices provided an incentive for the **restart of small-scale operations**. However, five other projects reached the end of their current life.

The largest number of people were employed in the mining of iron ore (76,150 persons or 60,810 FTEs), **while gold was the next highest with average employment of 34,153 persons (28,420 FTEs)**.

EYE ON IT

DMIRS have on the bottom of their website page a box entitled.

Subscribe to updates.

The department provides a range of newsletters and information products to keep you up to date. Subscriptions to the latest DMIRS news services of your choice are available.

They are free to the public and cover a wide range of articles and information.

Click and keep yourself informed on the DMIRS web page.

SINGAPORE - *Singapore increased its gold reserves* by about 20 per cent earlier this year in a largely under-the-radar move that saw holdings expand for the first time in decades.

The purchases, which totalled about 26.3 tons, took place over May and June, according to data from the Monetary Authority of Singapore's (MAS) International Reserves and Foreign Currency Liquidity reports. The move came to wider prominence when it was picked up in the International Monetary Fund's monthly update, which shows it was the first increase in figures dating back to 2000.

"The change in gold holdings is a result of the continuous and ongoing efforts by MAS to ensure that the official foreign reserves (OFR) portfolio remains well-diversified and resilient through economic and market conditions," an MAS spokesman said. "The change is a modest step in relation to the overall size of the OFR portfolio."

MAS did not disclose how much it paid for the bullion but at today's price, that would be about US\$1.5 billion (S\$2 billion). Its total gold holdings amounted to about 154 tons, MAS data showed.

Singapore's central bank may have preferred to not draw attention to the amount of gold in its international reserves as this might encourage foreign-exchange markets to view the purchase as a move that strengthens the Republic's reserve position and potentially put upward pressure on its exchange rate, according to a blog post by Mr Ronan Manly, a precious metals analyst at Singapore dealer Bullion Star. Gold is seen as a long-term hedge against inflation risk.

The central banks of Serbia, Hungary, Thailand, France, Germany and Brazil added gold to their reserves in recent months. Russia, which built up its gold holdings to well over 20 per cent of its reserves, is now ranked fifth in the world for the size of its gold reserves,

China reclaims top gold production title Dec 2021

Australian gold mine production declined in the third quarter of 2021, In the September quarter, Australia produced 77 tonnes of gold, six tonnes and 8 per cent lower than the June quarter of 2021.

"With gold production figures now available for the first nine months of 2021, it appears that China has taken the lead again as the world's top gold-producing country,

Australia briefly became top producer for the first time, based on gold production figures for the first half of 2021.

China has been number one since 2007, but Australia is now challenging for that spot."

Australian gold production for the first nine months of 2021 was just under three tonnes less than China's production for the same period, according to figures released by the China Gold Association, with China producing 236.75 tonnes compared to Australia's 234 tonnes.

Payments for a Miners Rights online has changed at DMIRS. Because it is an *email system* DMIRS deems payment online a possible security risk.

Application can still be made online with proof of identity attached and once received by DMIRS, staff they will ring you to obtain credit card payment details. Very simple but do remember 5 day working week.

All other payments to DMIRS online remain the same as they are on a different secure system.(MTO)

Mine Closure Completion Guidelines

Following extensive consultation, the Department of Mines, Industry Regulation and Safety (DMIRS) has released a new [Mine Closure Completion Guideline](#), and the [response to submissions](#) to the draft version is also available online.

The Guideline clarifies what evidence tenement holders should provide to show they have met all the agreed closure outcomes and rehabilitation criteria as outlined in their mine closure plan.

A/Executive Director Resource and Environmental Compliance Dan Endacott said a key theme arising from the feedback received was clarifying how the Mine Closure Completion Report fits into the mine closure planning process.

“The Guideline has been updated to include a diagram outlining how this document fits into the life of mine process.”

“DMIRS considers it important that the requirements under the Mining Act are clearly articulated, as this will inform broader work across government on mine closure and relinquishment.”

“DMIRS thanks all stakeholders for their considered input into the process.”

More information is available on the [DMIRS website](#).

ABC Goldfields-Esperance.. FB

#BREAKING GOLD MINER CONFIRMS 2022 RESTART

The board of gold miner Focus Minerals has approved a plan to restart mining at its Coolgardie operations next year.

Focus Minerals, in which China's Shandong Gold holds a 49 per cent stake, closed its Coolgardie operations in 2013 amid a gold price crash.

Focus Minerals said it is in the process of identifying contractors to refurbish the Three Mile Hill processing plant at Coolgardie, and will also select a mining contractor as it progresses government approvals.

Kalgoorlie core library expanded to support mining industry

The Joe Lord Core Library in Kalgoorlie, Western Australia has opened following its expansion as part of the COVID-19 Goldfields-Esperance Recovery Plan.

The improved facility provides mining companies, geoscientists and explorers with greater access to view and analyse the drill cores containing a wealth of geoscientific information.

“The completed expansion of the Joe Lord Core Library is welcome news for the local community and mining industry, as it could save companies millions of dollars in research,

Kalgoorlie is now well-equipped to support our local explorers, which supports local jobs.

Drill core facilities are becoming increasingly important as demand grows across the globe for new economy minerals, and explorers work to uncover new deposits.

ABC Esperance.30th nov. FB

Western Australia is experiencing a modern-day gold rush, with new figures showing more than a quarter of \$1 billion was spent exploring for the precious metal during the September quarter. Bureau of Statistics data shows it was the State's best quarter for gold exploration since records began in 1988.

\$309 million was spent in the three months to September the 30th - up from \$117 million during the same period five years ago.

Warren Pearce, from the Association of Mining and Exploration Companies, said record investment was putting enormous pressure on the industry.

“Look they're bursting at the seams. The reality for the minerals industry and the service industry that supports it, whether it's the drilling companies or the labs doing the assaying and testing, the reality is they are struggling to meet the demand that's coming forward.”

NOX SERIES

Unearth more buried treasure.



Whether you're detecting on land or in water, our NOX metal detector coils make it easy to cover more ground, go deeper and get into even the tightest spots. So you can discover more hidden treasures.

Fully Minelab approved and available in three sizes, they simply plug-and-play into your 600 or 800 Minelab Equinox detector.

- Fully submersible – waterproof to 3m /10-feet
- Available in 3 sizes: 10x5", 14x9" and 15"
- Fit EQUINOX 600 and 800
- 2 year warranty – register at coiltek.com.au



10x5" NOX coil

When you need to manoeuvre tight spots and detect in high trash areas, this little coil offers superior sensitivity and pinpointing ability.



14x9" NOX coil

With an elliptical shape and great depth, pinpointing and sensitivity capability, this robust coil is ideal for detecting in water and open fields.



15" NOX coil

The largest and deepest searching coil for Equinox detectors, this one's built for the serious treasure hunter. It covers more ground and detects targets other coils can't.

Want to learn and understand more about Geology.

Possibly pinpoint new gold deposits.

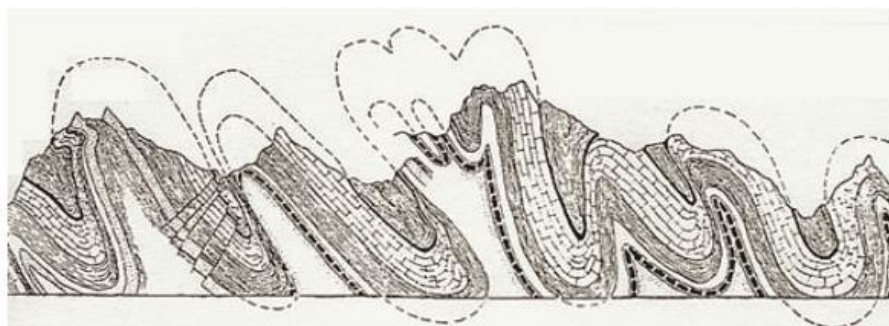
Buy Dr. B. Fagan's

UNDERSTANDING GEOLOGY ... Geology for Non-Geologists.

UNDERSTANDING GEOLOGY
Geology for Non-Geologists

Dr Robert Fagan

For PC & Mac



*A fully narrated, full colour, illustrated,
40 chapter, digital textbook in
PowerPoint Presentation format*

Web page: understanding-geology.com

This digital text or course is designed for first year geology students, prospectors, mining personnel, teachers, engineers, bureaucrats, financial analysts, journalists, corporate executives, managers and other professionals needing a full & comprehensive overview of geology, what geologists do, and how to understand & make productive use of this information.

Download-able \$US100.

With an additional 20 chapters on prospecting & small-scale mining. Activate the web page link now for more details & to download an example chapter.

Extending your phone coverage in the bush By D. Kitson

At the October 2021 Perth Branch meeting this topic was covered and the attached sheet of notes was handed out. It contains many words and references that can be further researched by individuals - google the words - to make up a communications solution that best matches your particular needs.

Having presented this material to our 92 attendees and distilling the responses from a show of hands and answering many questions afterwards perhaps a more general simplified picture can now be painted.

20% of participants had a Sat Phone. This virtually assures you of communications as long as your credit is good! but as its switched off most of the time - mainly due to the need to orientate the antenna it's not generally available for incoming calls. We discussed different Sat Phones and monthly costs - costs can vary widely so it may be worth a re-look.

Most people had a terrestrial Telstra phone of some type - mainly due to the fact that Telstra provides by far the best coverage of our prospecting areas. About 10% had bought the range extending CEL-Fi GO. Some reported that while it had improved coverage and is good on roads where Telstra have focussed coverage it does not always give good coverage in the bush. The writers experience with several CEL-Fi GO users in the bush that in every case the use of a fixed elevated directional antenna such as a Yagi gave much improved coverage. So it's worth exploring plugging in a Yagi rather than the supplied whip antenna.

Of course, a Yagi cannot be used on a mobile vehicle.

So, let's look at Telstra service for the bush.

I am not personally a favourite of Telstra, as also vehemently expressed by others who live with the Love-Hate relationship with our national carrier. What a shame! There is a private members bill currently being promoted that may make all communication providers act more respectfully towards their customers as well as improve coverage - so there is hope! -

Meanwhile, I would prefer the Telstra motto to be "... it's how we collect!"

Some years ago, many phones had enhanced long distance performance because they had either the "blue tick" or an external antenna port to connect a range-improving external antenna. These phones were on the now obsolete CDMA system or soon to be closed 3G. This will cease in 2024. Most modern phones are now at least 4G with no external port - however some are available "on-line" from non-Telstra sources - just insert your Telstra SIM.

In 2021 the coverage area of 3G is largely matched by 4G from the same Telstra towers. When 3G disappears in 2024 it will leave 4G using the 700 MHz band. This promises coverage at least as good as 3G with higher data rates and a system that can handle more users. This means that your YAGI beam antenna will only have to cover the 700 MHz - called band 28 and not the spectrum up to 850 MHz which carries 3G.

Such a large bandwidth of frequencies is a challenge for the antenna designer. Providing both high gain and broadband is tough. So, our antenna of choice can now be simplified a high gain, say 12 to 15 dB, 700MHz Yagi and that's the antenna you need to google. It is probably going to have 11 to 15 "prongs" or elements.

Don't buy an antenna that offers 1800 or 2100 MHz or MiMo or LPDA.

A bulky semicircular reflector or phased array type can be great but doesn't transport easily.

Point the antenna with the elements vertical - Vertical Polarisation - with the coax at the back of where you are pointing. It is important that the coax and the feeder extension loop at the back so that the feeder coax is kept well away from the elements. Often the antenna comes with a short piece of coax and a plug. This needs an extension coax which should be kept as short as possible. Be aware that coax at these high frequencies can lose a lot of what you have just gained with your high gain antenna so check those numbers carefully. The specs for coax cable should show loss in dB per 100ft at a certain frequency so you need to calculate your loss at 700MHz for say 8 meters (17ft) of cable. You can easily be sold a set up that loses 10 dB - aim for 3 dB maximum loss.

Once you have worked out your mast height and position don't be afraid to chop off the un-used coax and re-terminate it with a connector that best fits your set-up. Most are crimp connections and can be a bit tricky to get right. You can buy the connectors from Jaycar

The notes also show the large number of coax adapters, and you may well need a couple or have a nasty surprise.

You will need a mast. The 3 m Bunnings Alu 3 section paint brush extender is good and has worked well for me as for others at our meeting. However, I am going to get bit more height and wind proof with 3 guys. I have just bought a 4.5m Jaycar 3 section mast for \$62 (with discount). On top of that I will assemble, in the field, a 1-meter piece of electrical plastic pipe and then slip it over the bottom half of an element at the antenna balance point and tape it secure. Mechanically this has worked well for me and ensures the whole antenna and coax is well clear of any metal. The \$62 mast also allows for rotation at the guy ring so I can point it where needed after erection. Sometime there is a local mine with accessible phone coverage so even though you are looking for the published Telstra tower its worth slowly rotating the Yagi for best reception. Golden Grove south of Yalgoo is one example.

That extra height will get the antenna above most of the canopy of the bush. Leaves and branches will reduce or attenuate phone signals.

So how can an antenna that is say 80 km from the Telstra tower can get a usable signal?

As you can see from the formula in the page below to "see" - line of sight - at 80 km requires a 107-meter-high mast or tower at each end. That's not practical ...

The tricks in your favour are:

- a. Telstra's towers are usually on the highest local ground.
- b. At your end, select high clear ground for your camp. That's important. Don't hide your antenna behind a tree,
- c. Additionally and fortunately radio waves although electromagnetic, like light, are at a much lower frequency and so effects like diffraction or reflections come into play. Weather causes inversions with tropospheric ducting. These can all come into play to extend range.

Because they are variable, they may work best at certain times of the day. Early evening is often best, and your phone may suddenly "beep" with an SMS that has just come through.

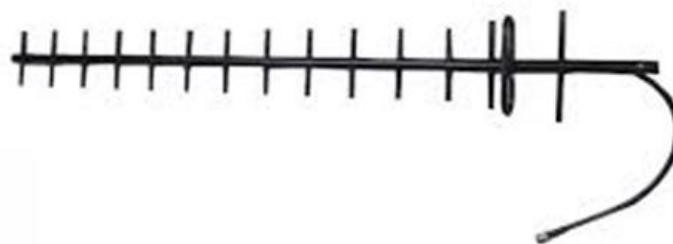
Imagine a sunset where the bright direct rays suddenly disappear and are replaced by a glow. At radio frequencies this "glow" of radio energy can be very strong, enough to have good communication. The glow can also come from a point above the horizon due to the ducting mentioned above so make sure your antenna is pointing not only in the right direction but a few degrees above the horizon.

Now a few words about working with weak phone signals.

Despite all your efforts as above the result is often a marginal signal level - i.e., "no bars" and the connection may be intermittent. While phone coverage needs relatively little signal strength the same is not true for data. That is with the exception of SMS. SMS messages present a very small demand on data, much less than a phone call. Often, mysteriously an SMS "goes through" unexpectedly - possibly due to another phenomenon called meteoric scatter. Here intense signal transmission occurs for a few seconds when a meteor enters the earth's atmosphere and burns up leaving a highly reflective trail of ionised particles in the upper atmosphere. The Amateur Radio fraternity are familiar with this effect and use it.

Downloading email may be OK until someone sends you a massive 10MB picture. That can effectively block your email system and you can't clear it until you have downloaded or managed to delete that mail from the server.

Apps such as Facetime are pretty efficient in data rate needs but may be too "thirsty" to work in the bush. However, it is possible. I personally managed to have a very clear Facetime video session with my grandchildren while just over 35 km from a mining company tower that served up Telstra even though it didn't appear on Telstra's coverage maps.



Blackhawk 14db Yagi booster aerial, Telstra

I was seeing 3 bars on my relative signal strength meter on the modem screen. I found that by ... slowly ... slowly rotating the Yagi to find the best signal. You will see that there's a several second delay in the readout of signal strength so be patient and swing it back and forth slowly. Don't give up easily, try later in the day or when the weather changes.

Finally, be aware that being on the fringe of coverage means that your phone is working hard. Even though you have no connection your phone may be receiving the tower signal and shouting back "I'm here" but the tower is just not hearing you, all the time. This means your phone is transmitting at maximum power and soon runs the battery flat. A fully charged phone puts out a slightly stronger signal so try leaving it plugged in for best results.

Importantly, accept that a trip can be a new experience where you may have no phone!

21 years ago, in December 2000, The Battlers Bill was passed by the WA State Government.

A big win for APLA and
the state's prospectors!

The Battler's Bill was Legislation passed by State Parliament in December 2000. Recognising the importance of Prospector Metal Detectorists and give the everyday battler a go. This Opened up 20 million Hectares of the State tenements for prospectors looking for alluvial gold. APLA, fought hard and long for this right to prospect over Exploration Leases making submissions over 4 years. These amendments saw strong opposition from CME and Exploration Companies.

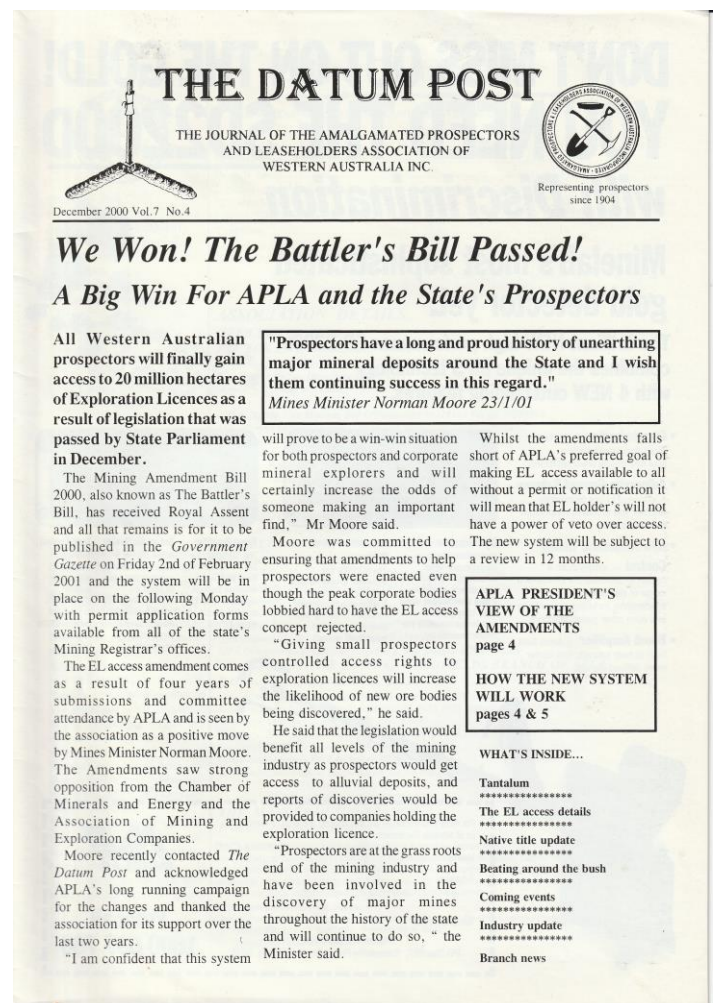
The EL holder is notified by legal prospectors of discoveries. Penalties applied to those that don't have permits.

Known as the **Battlers Bill**. Grass roots of prospecting. Bought bought also partially because **exploration Licences had expanded in size and longevity leaving vary little ground available**. Most prospectors sort this change and with it the S40e's. Giving small prospectors-controlled access rights to EL's which in turn increases the chances of new ore bodies being discovered.

Scott Wilson was President then. Secretary Lindsay Stockdale, Bill O'Donnell- Native Title.

In December 2000 the Mines Minister Norman Moore along with state cabinet endorsed proposed legislation that allowed the holder of a miners right to search for alluvial gold using hand held tools on EL's- exploration license. Prospectors and larger exploration companies seek different targets because prospectors are generally looking for alluvial gold but mineral exploration companies are searching for larger, economically viable mineral deposits. This is managed through DMIRS so they don't impinge on their respective activities, known as the Section 40E permit system

The concept was to open the ground to increase the odds of someone making an important find which in turn benefits the State.



You can thank these members, who are volunteers, for fighting for access so that you as a member can prospect on WA Exploration leases 21 years later.

BRANCH NEWS

ALBANY BRANCH

Meetings held 3rd Saturday of every second month. Each meeting consists of general Branch business and a guest speaker to assist members. Meetings are held at the Albany Men's Shed behind 77 Sanford Rd, Albany at 4pm.



GOLDFIELDS BRANCH UPDATE

Meetings are held at the Regency Room at the Tower Hotel Crn Maritana and Bourke st Kalgoorlie meetings on the **last Thursday of every second month.** Contact R Laing 0418 930 064



year

Goldfields branch meetings continue to be well attended.

In September we had a great presentation by Lindsay Stockdale sharing his wealth of experience in prospecting how-tos. "A Prospectors View on Looking for Patches"



1997 Awards for Environmental Excellence
Mr Lindsey Stockdale
Individual Small Operator – Kalgoorlie

The Goldfields Branch had a float in the recent St Barbara's Day Parade. It was great to hear the Announcers thank us and say that 'without prospectors we wouldn't be here'!

Minelab (PRO-SONIC Wireless Module) door prize winner for September 2021



In our final meeting for the year in November we had a very interesting presentation from Dr Bob Fagan on "Best Alluvial Gold Prospects within 50Km of Kalgoorlie". Our new APLA President James Allison also attended our November meeting and our members appreciated meeting James and hearing about his background.

At our November meeting we also trialed new technology to allow our members who can't physically make our meetings to attend via Microsoft Teams. (Thanks Trent for your great help on the night) We've had some good feedback from members who attended this way and we will continue with this technology next year.

Our door prizes continue to be a popular part of the meetings.

Congratulations to all our recent winners and thank you to Minelab (DD Coil and Pro_finder 25), Finders Keepers, Les Lowe and James Allison for their donations.

The Goldfields Branch had a float in the recent St Barbara's Day Parade. It was great to hear the Announcers thank us and say that 'without prospectors we wouldn't be here'!





Other parade entries



We wish everyone a Merry Christmas and hope to see you next year.

Our first meeting for the year will be on Thursday 3 February at the Tower Hotel, Kalgoorlie.

MANDURAH BRANCH

Meetings held at 1.30pm, 2 Leslie st Mandurah. See APLA website for date

Meeting Dates 2022: 9 Jan, 13 March, 1 May (AGM, Camp notice), 11 September, 13 November

January 9th 2022 meeting members are asked to bring a small plate of food for afternoon tea.

Contact Bob Wilson 0429 001 515

SOUTHWEST BRANCH

Meetings Fourth Wednesday of every Second Month at the Capel Golf Club at 7:00pm - \$5 Includes Supper)

Contact Judith, SW Secretary for more information, 0428385457



PERTH BRANCH UPDATE

APLA Perth Branch is conveniently located for Perth Members and now meets in the WA LAPIDARY AND ROCKHUNTING CLUB.31-35 GLADSTONE ROAD, RIVERVALE WA. Next meeting Wednesday 8th December .

Contact Sue McKenna 0419 646 656

Perth Open Day

Once again on Sunday 28th November Perth Branch held their annual Open Day. This year the event was at Swan Active Centre Alton Park, Benara Rd.

Guest speakers included Connie Cocksey from DMIRS, the Australian Maritime Safety Authority, Bill O'Connor and Aaron Raddock.

56 new APLA members were signed up with a further 20 odd waiting until their Miners Right comes thru. Our State Treasurer Marise Palmer was kept busy all day. An excellent result with over 250 people attending the event.

A massive thank you to all Perth Branch members who volunteered to set up and help on the day and to Sue McKenna and Greg Young for their coordination of the event.





State Treasurer Marise Palmer. 43 new members with 15 more waiting on their Miners Right.

Excellent day.

Australian Maritime Safety Authority talk



A LITTLE HISTORY IN THE FORM OF EXTRACTS FROM LETTERS TO THE EDITOR IN THE PERTH DAILY MAIL ABOUT GOLD IN THE LEONORA AREA

TO THE EDITOR. **Tuesday 20 July 1897**

Sir,—I was very much surprised to read in your issues of the 1st July about an alluvial rush here, where there are 100 men making good wages, and I am of the opinion that whoever tends you this valuable information must be either a publican or a storekeeper who want to stir their business up a bit. Anyhow, I am game to bet you a 24-acre lease to a piece of paper that there has not been 50 ounces of alluvial gold got in this district for the past twelve mouths. There is, I'll admit, a so called alluvial rush some 25 miles from here, in the Diorite King country, that has been worked for over two years, and is about rich enough to starve a person. My reason for writing you is -to warn men against coming here, as there are hundreds of men carrying their swags through this country looking for work and cannot get it —Yours, A, BREEN.

TO THE EDITOR **Mav 1 .1903**

A well-known prospector of the old school brought 16 .oz. of alluvial in on Saturday, and realised £60 for his couple of months' dry blowing

His. last parcel was worth £80. The old chap naturally declines to give any information as to the locality in which he is working, but the result of his operations demonstrates that payable alluvial, exists in the vicinity of Leonora Mr. David Barnes, who backed the digger when out on the trip that led to the resent discovery, has 'a very nice 13 dwt. slug.

The prospectors around the Golden 'Champion are likely to approach the Minister for Mines with a view to arranging that the mills in the locality be subsidised,- so that they may be assured of having their ore treated there on similar terms to those existing at State batteries. . . !

TO THE EDITOR **Friday 2 April 1915**

Messrs. Madigan and party are now prospecting at Barlow's . Gully, about three miles north of Mt- Stirling. Very rich alluvial gold was found in the vicinity in the early days, presumably shed from a leader at the head of the gully, and the prospectors intend doing some work at the point in the hope of locating the source the gold- Messrs. Luke and Travers have commenced carting a parcel of 40 tons of ore from their lease at Linger and Die to the King of the Hills battery. The ore is expected to yield an average of about 30dwt. per ton. Several nice pieces of alluvial gold being obtained by dryblowers working at Wilson's Patch.

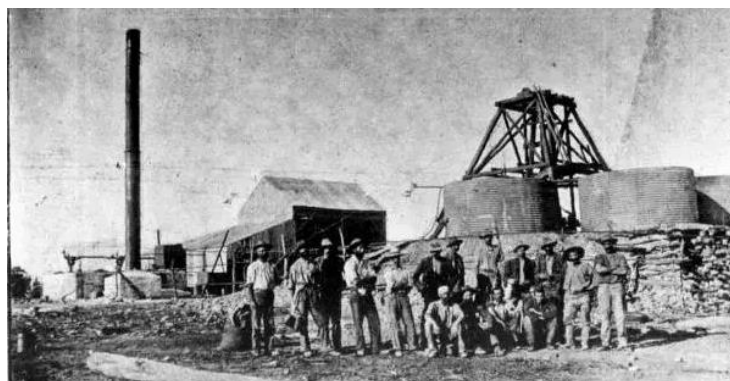
TO THE EDITOR **Tuesday 30 June 1936**

A crushing of 100 tons of stone from the Cardinia district was cleaned up at the Leonora battery this week, but the result was disappointing and will not pay the holders. Since the stamps dropped last month the returns in most cases were below what was expected, though a rich dab of six tons from the Leinster. to the north of Leonora averaged 6oz. per ton at the new battery quite recently. Parties of men in the Lawlers district are going in for sluicing. Already the trial runs are profitable and speedier than the dry blowing process.

Four diamond drills are now engaged in boring on the **Wahroonga lode**, which traverses about two miles of country. Wahroonga's new townsite is being surveyed to the north of the mine, about half a mile distant. This promises to be a busy centre at no distant date. Sixty men are employed so far.

Just a little extra on the Wahroonga mine

John Thomas Finch was born in Victoria in 1856. He served an apprenticeship with Horwood Brothers, Albion Foundry Castlemaine, then moved to the developing goldfields in Western Australia in the 1880s. He was joined around 1897 by his wife Caroline and children. In 1912 he and Frank Langford bought the **Wahroonga Mine at Agnew (1 km from Lawlers)** but abandoned it due to rising water. It was later sold to Claude De Bernales in 1930 and reworked as The Emu. In 1925 he took up Yeelirrie Station with sons Valentine and Leslie (known as Jim) and daughter Constance. He was also manager of Rhyland and Wertheimer's Freight and Passenger Service at Leonora in 1927.



Wilson's Patch Goldmine



A HUGE THANK
YOU TO OUR
SPONSORS





A big thank you to our sponsors

**MINELAB—COILTEK—ALTRONICS--NUGGET FINDER
REEDS PROSPECTING—THE PROSPECTORS PICK—
FINDERS KEEPERS—BLUEPRINT INDUSTRIES—
THE PROSPECTORS PATCH-- GOLD PROSPECTING WA.**

Personalized names on
APLA shirts

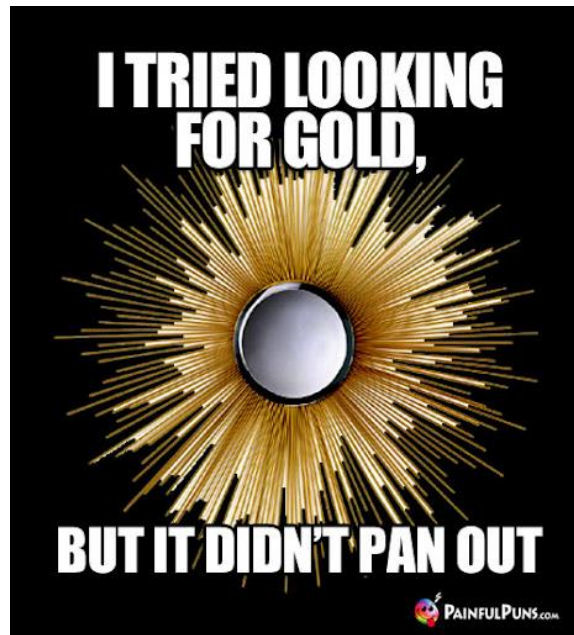
Not only shirts but towels
and other Manchester.

Towels with name and design
range from \$25 to \$35.

Most designs are done on set
sizes 100cm x 100 cm and 180cm
x 130cm.

Loads of different designs

Call Linda on 0409971438



Datum Post Advertising Costs 06/11/2019 to a targeted
prospecting audience of 2000+ members
All artwork must be provided to the Editor.

	Member	Non Member
Full Page Add	\$200	\$400
½ Page Add	\$120	\$220
¼ Page Add	\$80	\$140
Business Card	\$60	\$120

Please send all artwork to the editor
aplanews@apla.com.au

Cost is per issue. There are 6 eNews published annually.

DISCLAIMER: The Datum Post takes no responsibility for articles or advertising material published in its Newsletter. Opinions expressed are those of the original authors and do not necessarily reflect those of the Editor or the association. Persons acting on any article or advertising published in The Datum Post do so at Their own discretion.

NEXT ISSUE OF THE DATUM POST is Feb 15th , 2022
Cut-off date for advertising , articles, members photos 10th Feb
EDITOR contact: aplanews@apla.com.au
Steve Palmer 0498 353 232