



Do not miss the
APLA Field day at the
Dardanup Aero
Modelling Club,
Panizza Road
Dardanup on Sunday
28th March 2021.

Remember safety in
the bush is paramount,
make sure your radio,
GPS and PLB are
working correctly
before venturing out.

eNews of the



Representing Prospectors
Since 1904

this issue

Presidents Report **P.3**

Industry News **P.8**

Clearing Native Vegetation **P.25**

Miners Hall of Fame shake up **P.29**

Field Day

On behalf of the South West branch I would like to extend an invitation all APLA members to our Open Field Day to be held at Dardanup on Sunday 28nd March. 10am to 3pm

Promises to be a full day with talks on getting the most from your detectors, The full range of Minelab detectors explained, South West gold tourism venture, setting up your vehicle for safe towing.

We will also have many vendors displays tailored to make your bush visit more pleasurable.

Test pits to test your detectors, a detecting competition and a major raffle with many prizes.

Catering supplied by our hosts the Dardanup Aero Modelling Society
Hope to see you all there.

David Birch

President
APLA Southwest

APLA ASSOCIATION CONTACT DETAILS:

State Delegates- admin

President. Les Lowe pres@apla.com.au
Secretary. Marise Palmer sec@apla.com.au
Treasurer. Kurk Brandstater treas@apla.com.au

Branch Officers of APLA

Perth Branch

President. Greg Young perpres@apla.com.au
Treasurer. Marise Palmer pertres@apla.com.au
Secretary. Sue. McKenna persec@apla.com.au

Albany Branch

President. Gerry.Gregson albanypres@apla.com.au
Secretary. Bruce.Smith albanysec@apla.com.au

Mandurah Branch

President. Alan.Branchi manpres@apla.com.au
Secretary. Bob.Wilson mansec@apla.com.au
Treasurer Anne Lowe mantres@apla.com.au

South West Branch

President. David Birch swpres@apla.com.au
Treasurer. Denise.Hough swtres@apla.com.au
Secretary. Judith.Smith swsec@apla.com.au

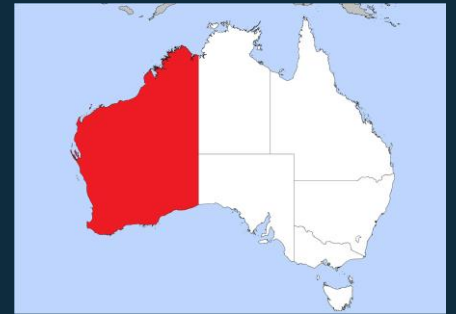
Goldfields Branch

President. Tim Bates goldfieldspres@apla.com.au
Secretary. Robert Laing goldfieldssec@apla.com.au
Treasurer. Annie Laing goldfieldstreas@apla.com.au

THANK YOU TO OUR
MEMBERS



West Australian State Borders are open.



Easter Holidays are coming up.

There will be an extraordinary amount of traffic on the roads.

With no overseas holidays there are a lot of caravanners who have little or no experience of travelling on WA roads....Take care when passing or entering main traffic areas in the country towns.

From the President's Desk, Mar 2021

And the beat goes on – only louder! The holiday period is over and it's back to work. Since the word got out to prospectors that the Mining Regulation 169 had been introduced into the Mining Act, the enquiries and calls for help with legal and DMIRS issues have gone through the roof. Add to this the systemic failures within DMIRS IT systems and DMIRS strict adherence to the letter of the law and procedures and it's a recipe for extra vigilance by APLA to ensure that tenement holders are not ripped off or disadvantaged through no fault of their own; and YES I used the words "Ripped Off" intentionally.

List:

1. A tenement holder has his tenement forfeited (lost) because despite sending evidence to DMIRS to support his court case arguing that he should not lose his tenement, DMIRS IT and e-lodgement systems failed to acknowledge receipt of that evidence or a bounceback message and the evidence didn't arrive in the Warden's Court. No evidence means no case which then means tenement w taken from the holder.
2. DMIRS informed two different tenement holders that their tenements were being forfeited as they had not lodged the required Operations Reports within the stipulated 60 day time period, when in fact, they had!
3. DMIRS inform a tenement holder that because he completed BOTH sections of his Form 5 Ops Report. i.e small prospecting activities AND the mineralisation report on the same form that the report was invalid and he tenement was to be forfeited. When in fact the Form 5 states in the small print that it can be both types - "and/or". Still we have no apology or why from DMIRS.
4. SPL applicant asked at a Regional Office if an SPL can be applied for in the name of his company. He was incorrectly told that he could do that! The application was duly lodged in his company name. It was subsequently refused by the Registrar on the grounds that an SPL can only be applied for in the name of a natural person and not a business or company name. DMIS retained the application fee around \$320.00!

The list of poor service and poor advice is endless and APLA is working with DIMIRS to sort out the problems and improve service levels. It's not good enough while DMIRS praises itself about how good they are while we see the huge chasm of reality. My emails tell me a very different story to those from DMIRS. Up until about 6 months ago I had one or two incidents of this type per month. Now, I'm getting three to four a week and some are ending up with APLA taking on the court cases that stem from this. It's a bad look for DMIRS from where I'm sitting.

Add to this lot, the exponential increase in Objections to Grant By Expedited Procedure coming from Native Title Traditional Owners and their lawyers and APLA has case load big enough to start its own legal practice!! If only we had that sort of money. Yes, APLA does those cases as well.

But one big contributory issue is prospectors themselves. I often say to anyone that cares to listen that "prospectors are often their own worst enemies". I see more and more recreational prospectors wanting to own their own tenements and have go at digging dirt. The source of this increase is "the baby boom" and the price of gold, more and more of us have the money and the time to see if they can dig deep holes for gold. There is also more knowledge floating around, cheaper earthmoving equipment and there are many businesses, good n bad, that will take your money to tell you how it's done. It all sounds like fun doesn't it? Well, it isn't much fun if we don't study the rules of the game.

Owning a tenement is a very different game and very complex concept to just swinging a detector. Once your in the tenement game, you have laws, rules and obligations such as reporting, environmental compliance, native title, aboriginal heritage, rent, rates, poachers, gold stealing etc,etc,etc. Its the lack of awareness and the misunderstandings of the obligations and the law that gets people into trouble. This ends up in a court case or a dispute with DMIRS. Trying to excuse yourself by saying, "Sorry I didn't know I had to do that" won't cut the mustard with DMIRS or the Warden's Court. Either your tenement is lost or there's fine heading to your mailbox. Peeps – spend a bit more time learning the rules and less time dreaming of how much gold you'll be finding. Because if you ignore the legal side of things, owning a tenement will be a nightmare for you.

Meanwhile, APLA is currently in talks with DMIRS and the Native Title Tribunal, supporting our members about:

1. E-lodgment failures
2. Incorrect public counter advice in some areas
3. Final comments Excess tonnage limits
4. Clearer language to be used in DMIRS communications.
5. Extending the ten-day obligation to reply on POW further information requirements
6. The increasing case backlog of the Mining Warden's Court
7. Native Title Objections to Grant using Expedited Procedure.
8. Prospecting Licence conversions to a Mining Lease

And for our members, presently we have 7 Warden's Court cases on the go. Three of those have been kept out of full hearings in court. Instead, we have negotiated those into beneficial Access Agreements for the SPL applicants. They're the ones we've won. One looks like it's going into court and the others still in melting pot involving ongoing adjournments so we can resolve the issues. However, the workload we have at the moment is so demanding and so many other problems coming at us, we may have to change how we advise our members. There are only 26 hours in a day, 9 days in week and 372 days in year. Well, they are in our year anyway.

Cel-Fi phone boosters! Better deals

Altronics, one of our major sponsors now stocks the Cel-Fi mobile phone booster system. Our research indicates they have possibly the best price in Perth. Check out Altronics across Perth. They have branches near you and very quick mail order for those of you in the regions.

<https://www.altronics.com.au/>



Photos! Photos! Photos!

Remember to take photos of any tenement marking out and applications that you do this year. It will become a necessity with DMIRS in the near future.

The Minelab prospectors Economic Value Survey is to be done again!

Last year you may remember that Minelab implemented a survey to obtain data to support our contentions of the true value of prospectors and small miners to the regional areas of WA and across Australia. However, each of the State representative orgs disputed the final figures and we successfully lobbied Minelab to insist their survey contractors had overlooked many important factors. Consequently, the survey is to be repeated in the near future. To assist the survey, APLA has spent many hours garnering the data required to ensure that the survey contractors, BDO get a better result this time around. Please help us to help you. This survey will be paid for by Minelab but APLA and prospecting will benefit enormously from it. Help us by answering the questions. It's simple and nothing sinister. If that was the case, APLA wouldn't get involved.

A message from APLA's Technical Advisor (or "hit man" as he often referred to!)

When sending us an email about a problem, we need your name, your APLA member number, the tenement number, the name on the tenement register, whose name is the tenement in or PLH involved. We're not clairvoyant and we're not good at guessing. It makes our job harder when we have to dig around for an hour or more in our member database or DMIRS records to find out who we're dealing with. Have a look at your own email address and you could see that goldlunatic@yahoo.com is not very helpful in knowing who you are. It's like a jigsaw puzzle that we don't have time for. Same with phone calls. E'g "Hello, it's Fred!" – "I know 9 Fred's, which one are you?" – "No. I don't remember you from 25 years ago outside Wiluna!". I recognise my wife's voice, my granddaughters voice and the voices of my two sons. I don't recognise yours. Introducing yourself with your name and member number will get "grumpy old us" off to a better start to our future relationship. Next, when first informing us for the first time or we ask to send in every scrap of paper that you have about the problem, it means send EVERY document. This is important. Just one word in a legal or official document can make a huge difference to the issue. Even the dates on the emails are crucial. Send everything because we are flat out busy and getting back to you asking for more documents takes up our scarce & valuable time. Thank you.

Good luck and take care,

Les Lowe – APLA President.

EDITORIAL

Steve Palmer. Editor

Contact: **0498353232**
aplanews@apla.com.au



From the Editors Desk

Over the past years APLA have been harping on about a number of important issues that many people take for granted.

Safety, Communication with Pastoralists and Environmental.

Safety.

If you want to commit suicide (which is against the law, not to mention some religious issues) there are easier ways to do it than trapse around the bush in a \$30,000 dollar car, an expensive camper and around \$10,000 of detecting equipment. Not to mention the trauma of Emergency Personal who have to find and identify the body and inform distort relatives.

Let Common Sense prevail. A radio, GPS, PLB, water and telling someone the area and estimated time of return are basic requirements. Yes, there will always be cowboys but one would like to think that as an APLA member with access to so much knowledge you are one step ahead of the pack.

Communication.

If you are going on an active Pastoral Lease you should try to contact the Pastoralist or Manager. It is common curtesy to notify the pastoralist you are on their property. Not only for your safety (shooters, cattle etc) but they live and work on the station. Adopt a good neighbourhood policy, if you are usually wandering around the area for a few days or a few months.

Phone contact can be made to most stations and DMIRS will give you a number once you have explained the reason for phoning. Most Pastoralists appreciate the call, there will always be the odd exception. Both the Pastoralist Association and DMIRS have already received a number of calls this year, about people just camping anywhere on their property, make sure it is not about you!

Environmental

Rubbish .. take it back home or to the nearest Shire bin. Do not burn or bury it ,animals will dig it up. Put it in a rubbish bag and dump it in the nearest bin on the way home.

Driving. stick to the tracks that already exist. By making new access tracks through the bush, you can create erosion problems. If it rains, **wait**, let the tracks dry out.

Again, Pastoralists will complain about these issues as would I. If someone dumped rubbish or drove all over your front lawn in suburbia you would call the police. Just use common sense and curtesy.

“Access to Western Australian tenaments and goldfields are a privilege that does not exist anywhere else in Australia, it is not a given just because you have a Miners Right . Abuse that privilege and it can be taken away.”

35 DEGREES SOUTH

CONSULTING LICENSED SURVEYORS
& HYDROGRAPHERS

Tel: (08) 98423766



**UAV Drone Surveys*

**Boundary (Repeg) Surveys*

**Feature Contour (Site) Surveys*

**Subdivisions - Rural/Residential*

** Mining Surveys & Lease Plans*

** Engineering & Construction Surveys*

** Hydrographic & Dam Surveys*

** Volume & Stockpile Surveys*

APLA Members - Mark & Pauline Anderson - Email: paulinea@35degreesouth.com.au

When you finish prospecting

When you finish prospecting, you should:

- Remove rubbish and leave the area clean and tidy.
- Check holes have been filled to help maintain the environment and stop fauna from becoming trapped or injured.
- If on a pastoral lease, notify pastoralists and any other landowners you are leaving.
- If prospecting on a mining tenement, advise tenement holders you have finished.
- .Fill in and return any reports or expense sheets for leaseholders.

Sunset Clause Annual Release 2021

Reports will commence at the beginning of May 2021

The Department of Mines, Industry Regulation and Safety's annual release of mineral exploration reports will commence at the beginning of May 2021.

Under Regulation 96(4) of the Mining Regulations 1981, known as the Sunset Clause, a list of reports that were submitted between 2002 and 2010, and in 2015, under Section 115a of the *Mining Act 1978* will be available on the [department's website](#).

Pursuant to Regulation 96(5), the holder of a mining tenement covered by the report, or any subsequent tenement granted in renewal of or substitution for such mining tenement, may object to the release. Objections to the immediate release of a report must set out specific reasons why identified reports, or parts of reports, should not be released and must be received prior to the release of the report.

Also pursuant to Regulation 96(5) objections to the release of a report are only valid for a period not exceeding five years in each case. Therefore, objections made between 2007 and 2016 to the release of reports submitted between 2002 and 2010 have now lapsed and need to be renewed or the report will be released.

Executive Director Geological Survey and Resource Strategy Jeff Haworth said tenement holders and operators will be able to submit objections for two months following the listing of the eligible reports.

"The first five-year period of confidentiality is mandatory. The period of confidentiality granted, following an acceptable objection from the tenement holder, is at the Minister's discretion," he said.

The Geological Survey of Western Australia (GSWA) released 626 "Grandfather" reports in 2020, some of which had remained confidential for up to 35 years. It is expected more reports held confidential for up to 19 years will be released this year.

"Mining and exploration data is a valuable resource for the State, mining and exploration companies and the geoscientific community at large", said Mr Haworth.

EYE ON IT

DMIRS have on the bottom of their website page a box entitled.

Subscribe to updates.

The department provides a range of newsletters and information products to keep you up to date. Subscriptions to the latest DMIRS news services of your choice are available.

They are free to the public and cover a wide range of articles and information.

Click and keep yourself informed.

Price drop prompts Indian investors to buy gold

A fall in gold prices has prompted Indian investors to take active interest in the yellow metal. Gold prices in India are down by nearly 17% from the all-time highs made in August 2020, when it had touched a high of Rs 57,000 per 10 gm.

"The vaccine rollouts and strong optimism over economic recovery have led to some liquidation in the yellow metal with risk-on sentiments. However, the fall in gold prices has allowed the investors who were waiting to buy gold at lower levels.. Gold prices are currently trading at Rs 46,500 per 10 gram at Multi Commodity Exchange (MCX), a comfortable range to enter new longs for investment. The retail spot market is now witnessing higher sales due to wedding season demand and lower gold prices due to reduction in custom duties," said TapanPatel, senior analyst at HDFC Securities.

The Chinese have returned to the market after the Lunar Day holidays which may prices and rally in base metals may attract demand for jewellery as well as industrial use resulting in the accumulation of gold in every decline.

WA government backs away from establishing petroleum industry rehabilitation fund.



For further information....

<https://www.abc.net.au/news/2021-03-04/petroleum-industry-environmental-fund-loses-favour-in-wa/13114304>

The West Australian government has backed away from establishing a petroleum industry environmental fund despite previously saying it accepted all the recommendations from the independent fracking inquiry.

A fund similar to WA's mining rehabilitation fund, in which companies contribute money to ensure abandoned mines are environmentally rehabilitated without costs falling to the taxpayer, was one of the recommendations made by the scientific panel established by the government to investigate the fracking industry.

Western Australian mining company workers charged over alleged gold theft. Extract News.com.au

Three people have been charged in connection with an alleged million-dollar gold theft from a mining company in Western Australia.

Detectives from the Gold Stealing Detection Unit in Kalgoorlie have charged a 73-year-old man from Geographe, Busselton and a 40-year-old man from East Fremantle, Perth with stealing as a servant. Police allege that the men stole large quantities of gold-bearing ore from the Greenfields Mill in Coolgardie.

More than 8000 tonnes of gold ore, worth an estimated \$1.18 million, was allegedly stolen, claim police.

It is alleged the charged men transferred funds from processing the ore into bank accounts they could access.

A 31-year-old woman from Boulder has been charged with possession of stolen or unlawfully obtained property.

Information obtained by detectives during the investigation led them to focus on a toll milling contract at the Greenfields Mill, where a parcel of 16,900 tonnes of gold bearing ore was processed. It produced 1800 ounces of gold, which had an approximate value at the time of more than \$3.3 million, the police said.

Over the past two months, the detectives executed nine search warrants at residential and commercial properties in the Kalgoorlie and Busselton areas.

The 40-year-old man is due in court on February 1, while the 73-year-old man will appear in court on March 23.

Aussie gold mining mega-merger overwhelmingly backed by shareholders. Extract News.com.au

Shareholders in Saracen Mineral Holdings have overwhelmingly voted in favour of merging with the gold miner's joint venture partner at the massive Super Pit in Western Australia, a tie-up that was immediately feted as making perfect sense.

Saracen and Northern Star Resources announced the plan in October, proposing the latter's investors would own 64 per cent of the combined entity, while Saracen shareholders would hold the remaining 36 per cent.

Saracen shareholders threw their support behind the deal at a virtual meeting on Friday.

It will create a global top-10 gold producer and Australia's second biggest miner of the precious metal behind Newcrest, with a market capitalisation of \$16bn.

The merger will bring Kalgoorlie's famous "Golden Mile" – one of the richest gold deposits in the world – under one owner for the first time in its 125-year-plus history.

Just as a matter of interest the following appeared from the Shire of Leonora.

A radioactive waste management facility could be established near the town. Leonora is becoming a major hub of goldfields activity. Good economic boost for the community?



**PUBLIC NOTICE
AZARK PROJECT
COMMUNITY INFORMATION SESSION
THURSDAY 11TH MARCH, 2021**

The Shire of Leonora and Azark Project Pty Ltd will be holding a community information session on Thursday 11th March, 2021 to provide an update and report on the proposal to establish a national radioactive waste management facility near Leonora. Former Federal Government Minister, the Hon George Gear, will be in charge of proceedings.

This proposal, the Azark Project, is being made in response to the Federal government's search for such a facility and would deliver significant economic benefits to the region.

At this information session, you will hear about the project, what is proposed and what it could mean for Leonora.

It is also a great opportunity for you to ask questions and share your concerns, views and opinions.

We welcome your feedback and encourage you to attend the information session:

**Thursday 11th March, 2021
6.00pm – 7.30pm
Leonora Bowls Club, Gwalia Street, Leonora**

If you would like to know more but are unable to attend, please email:
jim.epis@leonora.wa.gov.au

**J.G. Epis
Chief Executive Officer
Ph: 08 9037 6044**

**Shire of Leonora
PO Box 56
LEONORA WA 6438**

NOX SERIES

Unearth more buried treasure.



Gordon Heritage
Metal Detectorist

Whether you're detecting on land or in water, our NOX metal detector coils make it easy to cover more ground, go deeper and get into even the tightest spots. So you can discover more hidden treasures.

Fully Minelab approved and available in three sizes, they simply plug-and-play into your 600 or 800 Minelab Equinox detector.

- Fully submersible – waterproof to 3m /10-feet
- Available in 3 sizes: 10x5", 14x9" and 15"
- Fit EQUINOX 600 and 800
- 2 year warranty – register at coiltek.com.au



10x5" NOX coil
When you need to manoeuvre tight spots and detect in high trash areas, this little coil offers superior sensitivity and pinpointing ability.



14x9" NOX coil
With an elliptical shape and great depth, pinpointing and sensitivity capability, this robust coil is ideal for detecting in water and open fields.



15" NOX coil
The largest and deepest searching coil for Equinox detectors, this one's built for the serious treasure hunter. It covers more ground and detects targets other coils can't.

Want to learn and understand more about Geology.

Possibly pinpoint new gold deposits.

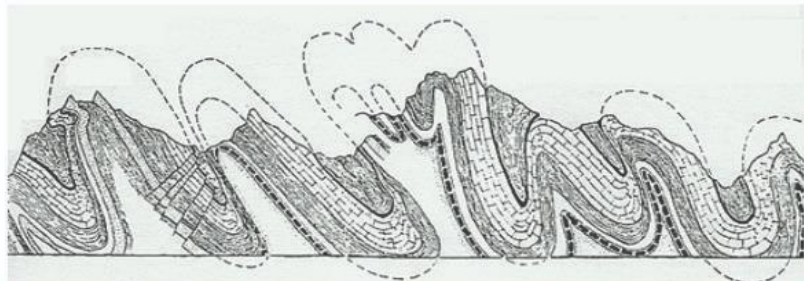
Buy Dr. B. Fagan's

UNDERSTANDING GEOLOGY ... Geology for Non-Geologists.

UNDERSTANDING GEOLOGY
Geology for Non-Geologists

Dr Robert Fagan

For PC & Mac



*A fully narrated, full colour, illustrated,
40 chapter, digital textbook in
PowerPoint Presentation format*

Web page: understanding-geology.com

This digital text or course is designed for first year geology students, prospectors, mining personnel, teachers, engineers, bureaucrats, financial analysts, journalists, corporate executives, managers and other professionals needing a full & comprehensive overview of geology, what geologists do, and how to understand & make productive use of this information.

Download-able \$US100.

With an additional 20 chapters on prospecting & small-scale mining

Can you imagine the excitement of finding a shiny gold nugget? Following are the world's 30 largest gold discoveries of all time, most of which were unearthed in Australia!

Viscount Nugget. Credit: E. W. Searle.

- **Lady Loch Nugget:** 617oz. Found in August 1887 at Sulky Gully, in Ballarat, Victoria by the Midas Mining Company, and named in honour of the then-Governor of Victoria's wife.
- **Canaã 5 Nugget:** 646oz. The fifth biggest nugget found during Brazil's Serra Pelada Gold Rush in the early 1980s, is on display at the Banco Central Museum in Brazil.
- **Dogtown Nugget:** 711oz. America's third largest true gold nugget found at Magalia, California in 1859, and is variously known as the Dogtown, Willard or Magalia nugget. It was melted down soon after.
- **Kum Tow Nugget:** 796oz. Found by Chinese prospector Loo Ching in April 1871 at Catto's Paddock, Berlin (now Rheola), in Victoria. It was melted down but a replica forms part of the Mineralogy Collections at [Museums Victoria](#).
- **McEvoy Nuggets:** 782-810oz. Found in either 1857 or 1858 by Nicholas McAvoy and Walter Palmer, in the Rheola locality in Victoria. The three nuggets weighed 810oz, 805oz and 782oz respectively, however they no longer exist.
- **Normandy Nugget:** 899oz. Found in a dry creek bed in Kalgoorlie, Western Australia in 1995. This sparkling hunk of gold is currently on display at [The Perth Mint](#).
- **Poseidon Nugget:** 953oz. Found in Tarnagulla, Victoria in December 1906, inspiring a festive gold rush.
- **Hand of Faith Nugget:** 960oz. Found by Kevin Hillier near Kingower in Victoria, in September 1980. It is the largest gold nugget found using a metal detector and is on display at the Golden Nugget Casino Hotel in Lake Charles, Louisiana, USA.
- **Viscountess Canterbury Nugget:** 970oz. Found at John's Paddock, Berlin in the Rheola locality in Victoria, in October 1870, and named after the then-Governor of Victoria's wife.
- **Canadian 3 Nugget:** 1,099oz. One of the largest nuggets discovered during the Victorian Gold Rush, it was found in January 1863 at Canadian Gully, Ballarat.
- **Heron Nugget:** 1,106oz. Named after a popular gold commissioner and found near Old Golden Point in Fryer's Creek on the Mount Alexander goldfield in Victoria, in March 1855.
- **Viscount Canterbury Nugget:** 1,114oz. Like the Viscountess Canterbury Nugget, its partner was found in May 1870 at John's Paddock, Berlin in the gold-laden Rheola locality in Victoria.
- **Sarah Sands Nugget:** 1,117oz. Named after the famous ship and found at Canadian Gully, Ballarat during the Victorian Gold Rush. It was unearthed by a French sailor in January 1853.
- **Golden Eagle Nugget:** 1,135oz. Discovered by 17-year-old [Jim Larcombe at Larkinsville, Western Australia](#) in January 1931 and named due to its resemblance to the majestic bird. It was a headline-grabbing national sensation, before being sold to the Western Australian Government.
- **Canaã 4 Nugget:** 1,185oz. The fourth-largest nugget found during Brazil's Serra Pelada Gold Rush of the early 1980s and resides at the Banco Central Museum in Brazil.
- **Canadian 2 Nugget:** 1,224oz. Discovered at Canadian Gully in Ballarat, Victoria, in January 1863.
- **Canaã 3 Nugget:** 1,230oz. Notable for its distinctive ferrous red hue, it is the third largest nugget unearthed during the Brazilian Serra Pelada Gold Rush of the early 1980s.
- **Great Triangle Nugget:** 1,277oz. The largest ever discovered in Russia, it was found in 1842 by prospector Nikofor Syutkin at Miass in the Ural Mountains. It is on display at the Kremlin Armoury in Moscow.

- **Canaã 2 Nugget:** 1,430oz. The second biggest nugget found during Brazil's Serra Pelada Gold Rush of the early 1980s and is on display at the Banco Central Museum in Brazil.
- **Lady Hotham Nugget:** 1,576oz. Named in honour of the then-Governor of Victoria's wife, it was found by nine miners at the Canadian Gully in Ballarat Victoria, in September 1854.
- **Monumental Nugget:** 1,648-1,696oz. The largest gold nugget discovered in America weighed in at between 1,648oz and 1,696oz. Discovered by five prospectors in August 1869 in the Monumental Claim in Sierra County, California.
- **Precious Nugget:** 1,717oz. Found at Catto's Paddock, Berlin (now Rheola) in Victoria by a Chinese prospector in January 1871. It was named after landowner Precious C. Williams.
- **Blanche Barkly Nugget:** 1,743oz. Found in August 1857 by a team led by Scottish prospector Sam Napier at Kingower, Victoria. Named in honour of the then-colonial Governor's daughter, it was displayed at London's Crystal Palace before being sold to the Bank of England and melted down to make sovereign coins.
- **Leg of Mutton/Canadian Nugget:** 2,144oz. The largest gold nugget discovered at Canadian Gully, in Ballarat Victoria, it was found on New Year's Day 1853.
- **Canaã Nugget:** 2,145oz. The largest surviving true gold nugget on Earth, the Canaã is the biggest lump of gold extracted during Brazil's Serra Pelada Gold Rush in the early 1980s. It is on display at the Banco Central Museum in Brasília.
- **RNC Minerals' 2 'Nugget':** 2,222oz. Not a true nugget due to its impure content, this enormous gold-encrusted rock was found in September 2018 at [RNC Minerals' Beta Hunt mine](#) near Kambalda, Western Australia, and reportedly contains 1,600oz of pure gold.
- **Welcome Nugget:** 2,433oz. The biggest nugget found in gold-rich Ballarat, Victoria, it was discovered by miners from Cornwall, England in June 1858. It was exhibited at London's Crystal Palace before being bought by the Royal Mint and melted down into sovereign coins.
- **RNC Minerals' 1 'Nugget':** 3,351oz. RNC Minerals found the gold-encrusted rock at the Beta Hunt mine in Western Australia in September 2018. This eye-opener is said to contain around 2,400oz of pure gold.
- **Welcome Stranger Nugget:** 3,524oz. This magnificent granddaddy of all true gold nuggets was found by English prospectors John Deason and Richard Oates in February 1869 at Moliagul in Victoria. The monster-sized specimen was broken into three pieces and melted down.
- **Holtermann 'Nugget':** 10,229oz. While the Welcome Stranger is the largest gold *nugget* ever discovered, the single biggest gold specimen ever found is the Holtermann. Dug up in October 1872 by German miner Bernhardt Holtermann at Hill End in New South Wales, it was crushed, and the gold extracted.



Holtermann "nugget"

Replica of the Golden Beauty Nugget. Credit: The Perth Mint.



We are repeating this article by Lindsay, from a previous issue as it can help you find gold.

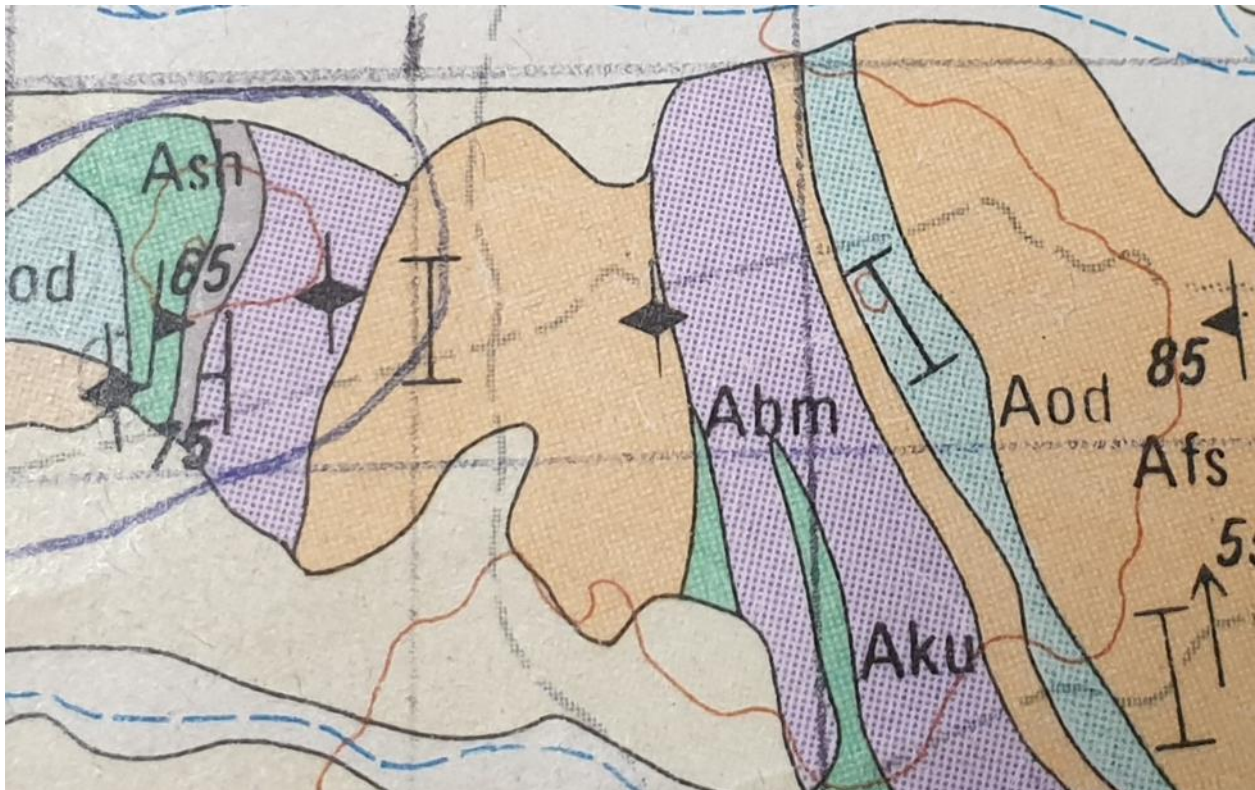
USING VEGETATION IN YOUR PROSPECTING. By Lindsay Stockdale

Over time we all develop by observation, our own methods and sightings on what are indicators for finding nugget patches. This is where vegetation can play an important indicator.

Spot patches of different vegetation within a surrounding area of resident vegetation can be an indicator. Some of my favourites in this category are Black Butts, Oak, Tea-Tree/Ti-Tree, various Salt bush and Samphire.

Particular tree's grow along fault lines with some instances allowing the tree to grow larger than any nearby similar tree, because of the fractured ground being more porous and allowing better soakage of rainfall.

A classic use of vegetation indication is when you want to follow a Geological Boundary or Contact, which can be a very productive work area.



Your first move to work a contact will be to locate one. This will be done by scanning over your Geological Map looking for your interested feature. For this exercise the above photo which has numerous contacts, but I have singled out the one in the middle of the page where a Felsic Afs comes in contact with an Ultramafic Aku . This contact is also enhanced by the inclusion of a Foliation.

Now my next move is to look on Google Earth to see how strong or evident the contact is. The above photo clearly shows the thick growth of Acacia's growing on the Felsic, left or West of the centre of the photo. Then on the right or East of the Felsic, growth on the Ultramafic, we find that the vegetation is sparser, made up of Salt Bush and Salmon Gums.



The above photo is from ground level standing on the Ultramafic, looking West to the Felsic. The Ultramafic has Salt Bush with the odd Salmon Gum while the Felsic is thickly covered in Acacia's with some Mallee Trees in the background.

This very distinct, different line of vegetation makes it very easy to work along a contact. Not all are as clear as this one but once you have a trained eye you will be able to use the vegetation to guide you along most contacts.



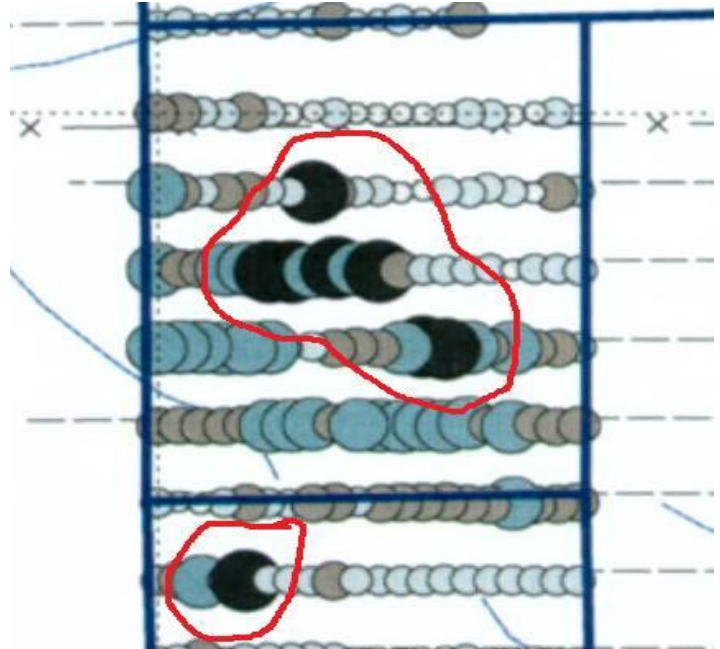
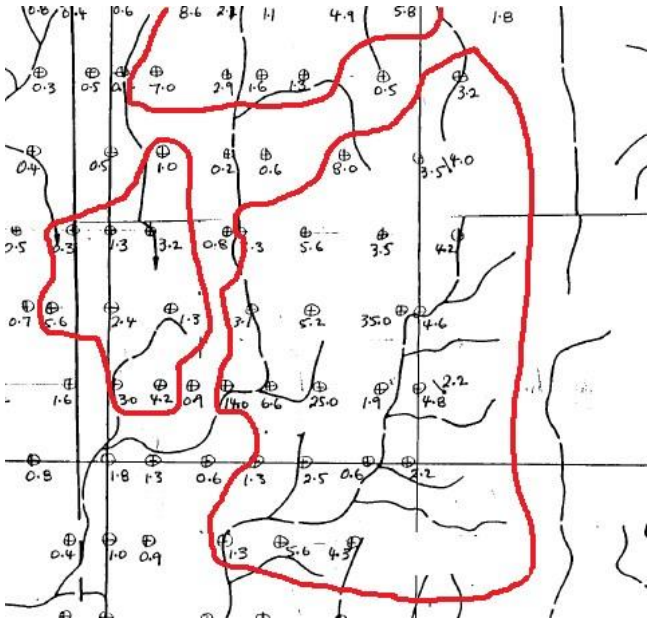
The above photo shows a very similar situation as the previous one, in that, I am standing on an Ultramafic looking West to a Felsic. The vegetation is much the same but the soil is heavily laterised. So along with different rock types and surface cover you will find different vegetation, but you will still be able to follow the different vegetation division of the contact.



New mural painted on the Wellington Dam wall.

The following was put on FB by Kris Dobbie.

How to narrow down your chances of finding a nugget area? most of our luck has been through lots and lots of research and reading of geological reports in the areas that are of interest to us, what has worked most favorably for us is chasing the high soil anomalies that we find in geo reports, 8 out of 10 times we pull right up on a nugget patch, these examples show two different types of charts you will come across in geo reports, first one has the sample grade in ppm (part per million) i have circled in red the areas i would go to which will increase my chances, the following pic is another type of sample chart you will come across here to i have circled in red the first areas i would try 😊



Does anyone else use a drone out bush? Send in some pictures for our readers.
aplanews@apla.com.au

BRANCH NEWS

ALBANY BRANCH

Meetings held 3rd Saturday of every second month. Each meeting consists of general Branch business and a guest speaker to assist members. Meetings are held at the Albany Men's Shed behind 77 Sanford Rd, Albany at 4pm.



GOLDFIELDS BRANCH UPDATE

Meetings are held at the Regency Room at the Tower Hotel Crn Maritana and Bourke st Kalgoorlie meetings on the **last Thursday of every second month.** Next meeting 25th March

Kalgoorlie Finders Keepers for all your prospecting gear

Goldfields Branch had our first meeting for the year on 4 February 2021. We had a very informative presentation by Peter McKenzie from St John's Ambulance on dehydration and snake bites complete with a demonstration on how to apply snake bite bandages. The presentation was well received with lots of questions from the floor.



On the 13th February The Goldfields Branch of APLA participated in the Kalgoorlie Boulder Chamber of Commerce and Industry (KBCCI) Explore the Goldfields Community Expo. This is an annual event held by the KBCCI to show case to the public a celebration of all things local, with Community, not for profit and sporting groups promoting the many opportunities and the vibrant lifestyle that Kalgoorlie/Boulder has to offer.

Whilst we are more of a lobby group, we wanted to show the public that we are there for those who are thinking of going metal detecting/prospecting. We managed to give out a few Membership Packs on the day to those who are looking to do some Metal Detecting.

Here is a photo of our stand with Rob Laing, Ziggy Wolski and Lindsay Stockdale.



Our next meeting will be on Thursday 25 March 2021 at the Tower Hotel, Kalgoorlie. If you are in town, please come and say hello.

MANDURAH BRANCH

Meetings held at, 2 Leslie st Mandurah. See APLA website for date

PERTH BRANCH UPDATE

- Training

Over the past couple of months Perth branch have run in conjunction with DMIRS several free training courses to members on Geoview, Tengraph online and Geomap.

Also, free training on using a GPS and Safety in the bush held at a local Park in Perth. The members enjoyed a sausage sizzle courtesy of Perth branch Volunteers.

A tremendous thanks to DMIRS and particularly staff members Egor LITSOEV and John Kirk.

There is also Introduction Training Course preparation on Monday 22nd March for all Camp attendees only, to be held at the Lapidary Club Rivervale, and a newbie camp is being run in April. All Members attending the camp should attend the March Training Session. Contact: Greg Young - perpres@apla.com.au
DMIRS will be our Trainer- for rules and regulations on where to legally find Gold.
Safety in the Bush. APLA's Code of Conduct. Expense and Finds Form. APLA volunteers.



Members from various branches at training on Tengraph Online and Geomap over the past couple of months.



SOUTHWEST BRANCH UPDATE

We hold our meetings the fourth Wednesday every second month at the Capel Golf Club from 7pm.

Our last meeting on 24 February was well attended, with guest speakers of Bill O'Connor and Mick Clark.

Bill described a soon to be released App that has the potential to put you on ground most likely to have gold.

Mick told us of the trials and tribulations of the filming of Aussie Gold Hunters. (One or both just may be at the Field Day).

We held a small Raffle with a prize of Headphones.

No one brought in any gold finds or unusual finds.



Mick Clark gave a talk on the trials and tribulations of Aussie Gold Hunters. Being thanked by Davd Birch.



Thanks to Bill O'Connor

Field Day Event

All APLA Members, family and friends and anyone interested in Prospecting with a metal detector.

We would like to invite you to our APLA Field day at the Dardanup Aero Modelling Club, Panizza Road Dardanup on Sunday 28th March 2021, 10am – 3pm. NO DOGS on grounds.

Food and drinks available.

Raffle with 1st Prize of a Minelab Eqinox 800 Detector and other good prizes drawn on the day.

Detecting Competition.

A variety of businesses will display all you need for success as a Prospector from camping accessories to Metal Detectors.

Talks and demonstrations during the day include:

Full range of Minelab metal detectors.

What information required before you go into the Goldfields.

Panning for gold.

Setting up your vehicle for safe towing.

Camping equipment.

Battery and solar power.

GPS and map technology.

NATIVE VEGETATION CLEARING. By Lindsay Stockdale

If clearing of Native Vegetation is proposed and the clearing is not eligible for an exemption, then a clearing permit is required.

In accordance with Section 20 of the Environmental Protection Act 1986, the Department of Mines, Industry Regulation and Safety (DMIRS) has been delegated authority for the administration of applications to clear native vegetation for mineral and petroleum activities regulated under the Mining Act 1978.

Well that's OK, but if you are driving over land that you hold no tenure, and you come across an obstruction that prevents you from continuing on that course, then you may have a problem. There may be for example a tree branch that has been able to grow across the track because of a lack of traffic or it's weight has allowed it to sag to a restrictive height.

What is your solution?

Easy, cut off the branch! oops, you can't do that because you will need a clearing permit.

No problems simply drive around it, oops, no you can't do that, because driving over Native Vegetation is classed as clearing, yep that's right you will need a clearing permit.

Being a law-abiding citizen, your only option is to reverse back until you can find a clear area to turn around and go back into town and get a clearing permit. And wait.

If you are out looking for new Greenfield areas, then you will be confronted with this scenario quite regularly. You look on Google Earth to work out a way of getting close to a new area, only to find that after having a period of 4 or 5 good seasons, which we have had a few years ago, the bush has closed up on your proposed passage and you can't get through. Well without some sort of improvement to the environment.

We had an incident a year or so ago when we lodged a POWp on our Prospecting Licence.

On our application we didn't make any account for access to the block because there was no track.

We were advised that we had to show where we were going to drive in, which was about 600m and we were told to allow for that track to be 3m wide and then add that area to our POWp application. I presume that area then adds to our MRF area.

All this, because driving over Native Vegetation is classified as Land Clearing.

Drilling Contractors, along with the Tenement holders they are working for, are confronted with the same restrictive conditions. Even though a drill rig, in some circumstances, can drive over Native Vegetation to do their work without having to bring in Bulldozers etc. to actually clear their drill lines.

You might say, "just use some common sense and simply drive around these obstructions". Why don't we get some common sense in place before we go out??

What I am thinking is, it is time for APLA, AMEC and the CME to sit down with all these Government Departments and Agencies and drum some common sense into them and get rid of these unnecessary rules and regulations.

I can guarantee that I would not be seeking changes if it could be proven that cutting a branch off or driving over Native Vegetation causes irreparable damage to the environment that it then causes deserts to form.

I hope to show with the following photo's how our environment can without any human intervention heal it's wounds / rehabilitate itself, without the need for unnecessary legislation that strangulates an important Australian Industry. Remember both State and Federal Governments stated that it was the Mining Industry that pulled Australia through the Covid 19 Pandemic. Why kill this Industry???



The above photo shows how a tree was naturally blown over, yet without any human intervention or any permits from the Environmental Protection Act 1986, the tree grew new vertical branches and appears to have been growing like this for many years.

The 2 photos' below show how cattle have damaged bushes and yet without any EPA permits they are recovering.





While we can't cut down branches, the above photo shows within a Local Council, to protect the powerlines from tree growth, the near branches to the powerlines have been pruned. It looks very obvious that these trees are very old and had branches cut off yet are showing excellent tree growth. I don't know if that Council or Power Supply Company applied for EPA permits or not, but either way I am dead set sure a permit did not enhance the growth of those trees.

In Horticulture, the cutting of a branch is referred to as Pruning. Pruning is carried out to enhance and control the growth of a plant.

Yet under the EPA the cutting of branches is a no-no.

Why are we forced to tolerate this ???

Let's see if we can get some common sense into these Government Departments.

The Australian Prospectors and Miners' Hall of Fame could soon change hands, while the neighbouring Hannans North Tourist Mine could be on the move.

The Department of Planning, Lands and Heritage told the ABC it is considering an application to assign the lease for the site to another party.

The Australian Prospectors and Miners' Hall of Fame chairman Chris Cairns said it was facing significant financial difficulties and the facility required repairs.

"After not having been able to sell the lease and building for some 18-months, a local business group approached us with an offer to take on the building and lease with the stated aim of operating it for the benefit of the community and consistent with the lease terms as a tourist facility," he said.

"With no viable alternative - despite claims by some that they were willing to help - there were no other offers, the Board agreed to sell, and the sale documents were signed shortly after Christmas.

"We wish the new owners well in their vision to revamp the facility and encourage the residents of Kalgoorlie to support them in this endeavour."

The situation raised concerns for Darby Renton, the former president of the Eastern Goldfields Prospectors Association.

"Once you take it out of the hands of the Australian people and you get one owner, then who knows what's going to happen down the track," he said.

"I just don't trust whoever he or she may be, in a concept that we started all those years ago."

City of Kalgoorlie-Boulder CEO John Walker said the lease for the hall of fame also covers the Hannans North Tourist Mine, but there should be no short-term changes for the facility.

"The ultimate lessor may have the larger area of land but if the tenant or the operator of the tourist mine (KCGM) wishes to continue what they do, then they're allowed to without interference, and that's pretty much what it is," he said.

"KCGM have told us that they don't believe the (tourist) mine should be owned by a private operator, it should always be in community hands."

In 2019, KCGM indicated it would stop operating the facility and Mr Walker said over the next few months, a study will examine the feasibility of relocating the tourist mine.

"It needs investment, it needs new attractions...and so I think people should be excited that we are looking at options to reinvigorate a primary tourist attraction."

APLA GOLDFIELDS BRANCH COMMENTS

At our recent committee meeting there were concerns raised about the continuation of the Australian Prospectors and Miners Hall of Fame APMHOF. Then added to that a Local ABC Radio report confirmed that there is a review being carried out by the City of Kalgoorlie-Boulder on the continuation of the Hannans North Tourist Mine which houses the APMHOF. The Cities CEO confirmed on radio that there was a proposed sale of the Lease to a private citizen but also mentioned this might not be in the best interest and could better be served as a community group.

So, there is a lot of work to be done and all interested parties may need to express their interest to become involved.

The following article is to remind members of APLA's close involvement of the original establishment.

“For your interest the article below written by Fay Jones in April 2001 for the official Newsletter of the Australian Prospectors and Miners Hall of Fame (ALMHOF).

This shows that APLA had a lot to do with the establishment of this Hal of Fame and means a lot to APLA with a time capsule buried there. “ R Laing secretary Goldfield’s branch



A Brilliant Idea!

Lindsay Stockdale has had a lot of input into the Australian Prospectors and Miners Hall of Fame over the years.

And the game's not over yet!

It began on Monday the 11th of April 1994, when Max King asked Lindsay to come around.

"There's a letter we need to discuss," he said.

At that time Max King and Lindsay Stockdale were the President and Secretary of the Amalgamated Prospectors & Leaseholders Association (APLA).

The letter was from Lee Ranford, who was the Director General of the Department of Minerals & Energy, advising APLA that there was a group from the Centenary of Federation Funding Committee in Western Australia looking for submissions.

The "Council of Australian Governments" had created this advisory committee to develop ideas and strategies on how Australians should celebrate the "Centenary of Federation" in the year 2001.

Lindsay Stockdale recalled, "At the time APLA was lobbying hard to get more milling facilities here to replace the government batteries that were closed down, and I think that was what Lee Ranford was thinking of. That we should go for some funding to get milling facilities spread out through the state for prospectors.

"But when Max read me the letter, I thought, 'What about a Hall of Fame for Prospectors?' and Mrs King was there and she said 'That sounds like a brilliant idea!' So the idea of even considering milling facilities went out the window and we just concentrated on the Hall of Fame."

The APLA branches around the State were quickly canvassed and with their 'all clear' the proposal was under way.

Max King wrote up the submission which had to be in by the 30th April 1994.

"I thought it was a good submission," Lindsay Stockdale said.

He explained the basis.

"During the period leading up to Federation, although the State of Western Australia was reluctant to join, the people of the Goldfields were in favour.

"Most had come from the Eastern States, and they were receiving poor representation in the WA Parliament.

"In March 1900 about 28,000 people from the Goldfields signed a petition to form a separate colony so that they could join the Commonwealth as a separate State. This petition was forwarded to Queen Victoria who advised Sir John Forrest 'To make a

resolute effort to bring the Colony into Federation at once.' The Western Australian Government then held a referendum on the 31st of July 1900 resulting in WA joining the Commonwealth."

It was on the historical significance of the Goldfielders' 'Yes' vote that took Western Australia into Federation, that APLA based their submission to receive federal funding for the Australian Prospectors and Miners Hall of Fame.

And much much further down the track they discovered they had been successful, when the Prime Minister of Australia, John Howard, in September 1998 pledged \$5million towards the project from the 'Centenary of Federation Fund'.

Shortly after that announcement the WA State Government pledged \$2.5 million, with a further \$500,000 announced recently.

At the same time as lodging the submission in April 1994, APLA sent copies to the different business leaders such as the Chamber of Commerce, Department of Minerals and Energy, Amex, etc. seeking their support.

"We got letters back from the Goldfields Esperance Development Commission and the Chamber of Commerce and that was it. No one else answered us," Lindsay Stockdale said.

"Then Kris Laurie rang one day and asked if she could get involved. Said she'd liked the idea and we seemed to be getting nowhere.

"Kris was a coordinator - so she took it on board and on the 1st July 1994 a meeting of State Government, Mining and Community leader was called in Kalgoorlie by APLA which resulted in the formation of a foundation committee whose main task was to formally constitute the project."

The Australian Prospectors and Miners Hall of Fame Ltd. was registered as a Public Company on April 6th 1995 and, in June 1995, as a tax exempt Foundation, Centre of Learning, Science and a Public Museum.

"Right from the beginning Max and I thought it had to be a Hall of Fame plus a complete mining museum," Lindsay Stockdale said.

"To stand alone financially, it has to be something big enough to keep the people interested and make them want to come."

About six months later the Foundation Committee called for expressions of interest from those who wanted to have the Hall of Fame built at a venue of their choice. Submissions came from the Coolgardie Shire, from Don Hancock to build at Ora Banda and from Hannans North Mining Heritage Precinct.

After due consideration it was agreed the site for the Hall of Fame would be at Hannans North.

"Hannans North was the favoured site

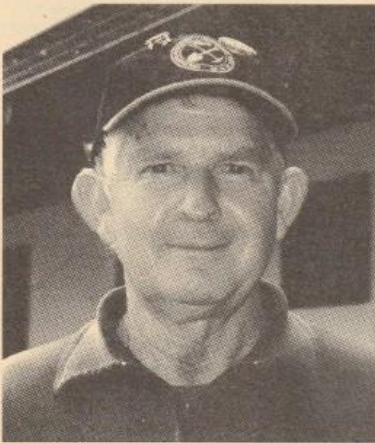


because of the infra-structure that was already there, but I felt we would be limited by the size," Lindsay Stockdale said

"Coolgardie's was an excellent proposition. They were going to utilise the old buildings that were there. You'd have been working within the town, but everything would have had to be built.

"I liked the idea of Ora Banda because it had the battery there and people would have to travel. I thought people would base themselves in Kalgoorlie and travel there and that would probably mean they would stay in Kalgoorlie longer.

"It will work out. I think with a two or three day ticket - instead of trying to get it all done in one day. They can casually go one day and have a break then go another day and have a break and



Lindsay Stockdale

go a third day. Historically the tourists stay in Kalgoorlie for two days, so we've got to stop that"

In 1996 the Foundation Committee was replaced by a Management Council. This effectively reduced what had been a committee of some thirty people, to a small working group of six people, who met on a weekly

basis and kept the caravan moving forwards.

The Management Council consisted of Kris Laurie, Wendy Carter, Kath Stanick, Norma Latchford, Bruce Harris and Lindsay Stockdale.

The Amalgamated Prospectors and Leaseholders Association formerly withdrew their name from the submission for federal funding, to be replaced by the Australian Prospectors and Miners Hall of Fame.

Lindsay Stockdale commented, "So APLA was right out of it then and it was up to the Management Council to keep it going."

In July 1997 the Board of the Hall of Fame in conjunction with the Royal Australian Institute of Architects, held a National Architectural Design Competition to select a building design for the Hall and Museum complex.

In September 1997 from a selection of 41 entries, the design created by Ahmad Abas of the firm R.J. Ferguson & Assoc, Perth WA was declared the winning entry.

Official launches were then held in every Capital city, commencing with Perth in December 1997.

"We thought we'd get the architectural competition done so we had a design to present,

Lindsay Stockdale said.

"From the official launches we were to have the contacts to approach to get the fund raising done."

In addition to the funds pledged by the Federal and State Governments, a considerable amount of money still had to be raised to complete the task, hopefully from the industry and its supporters.

Lindsay Stockdale said that at one stage there was talk of building the Hall of Fame in Canberra.

"Having the Hall of Fame here, the surrounding district is part of the museum and we must protect it, or it might as well have gone to Canberra," he said.

"For hundreds of kilometres around that museum we have our heritage, old mine shafts, they will form part of this museum. If you see an old mine shaft, if you've got any imagination at all you picture it could have been big enough to have a community there, a hotel - they were good drinkers in the old days.

"Wherever they started a little mineral field a town developed, it's not like this fly in fly out that we've got now.

"There are some people out there who want to fill in the old mine shafts.

"APLA have been lobbying the Department of Minerals and Energy against it.

"This will be an ideal opportunity for the small tour operators, because people who come to see the Hall of Fame, will want to see the surrounding district."

Great oaks from little acorns grow, and no truer example could be seen than the Hall of Fame silhouetted against the Goldfields skyline which began a just an idea, a little bit of electricity in a man's brain. "What about a Hall of Fame for Prospectors?" was where it all began.

Lindsay Stockdale had the idea, and he has stayed with that idea, right through thick and thin.

There was APLA, then the Foundation Committee, followed by the Management Council, and for the last two years Lindsay Stockdale has been on the Board of Directors, and he still has ideas, he still has a vision.

"My vision is a whole education system for the mining industry."

"One of the big things I have been pushing is the environment. It's so important.

"People have perceptions. Whether you like it or not people perceive the mining industry as environmental vandals and I've always maintained that we need something probably as big as the Hall of Fame again, just on the environment.

"That's how big an issue it is.

"It needs to be an exhibit that's very well presented to show the people of Australia we are doing the right thing.

"Show them we have things in place, controls, regulations, to show we are protecting the environment.

"Run the right way, I believe the Hall of Fame is one of the best things that could come to this town," Lindsay Stockdale concluded firmly.





MINELAB

www.minelab.com





A big thank you to our sponsors over the past years..

MINELAB---COILTEK---ALTRONICS---NUGGET FINDER

REEDS PROSPECTING---THE PROSPECTORS PICK

FINDERS KEEPERS---BLUE PRINT INDUSTRIES

**THE PROSPECTORS PATCH--- NATURAL GOLD NUGGETS &
JEWELLERY---GOLD PROSPECTING WA.**

For those members that do not wish to use caravan parks or camp in the bush, while prospecting in the goldfields regions here are a number of DEC free camping, station stays.



Goldfields Region
32 Brookman Street
PO Box 10173
Kalgoorlie WA 6433
Tel: (08) 9080 5555
Fax: (08) 9021 7831



Department of Environment and Conservation



DEC station stays in the Goldfields region



Station stays

Facilities	Goongarrie	Jaurdi	Mt Elvire	Lake Mason	Credo
	Homestead 12 Cottage 10 Sandalwood camp 12	Shearers quarters 6 Open shed 2	Homestead 4	Shearers quarters 6 Overseas cottage 2	Dongers 6
	✓	✓		✓	✓
	✓	✓		✓	✓
	5	2	1 only	2	3
	Rain water tank	Rain water tank	BYO	Rain water tank	Rain water tank
	✓	✓			Solar power
	✓	✓	✓	✓	✓
	✓	✓	✓	✓	✓

 Number of beds BYO mattress	 Showers	 Electricity – wired for BYO generator	 Drinking water
 Toilets	 Hot Water	 Wood barbecues	 Picnic tables



Charges Building with facilities (showers, toilets, basic kitchen facility, bed in building, provision for power).

Goongarrie* Jaurdi* Lake Mason Credo*	\$9 per adult	* Minimum charges for use of a building (Goongarrie), homestead complex (Jaurdi) or whole donger complex (Credo) is \$36 per night on weekend and public holidays. Bookings for buildings are on a first come, first serve basis. Whole site (group bookings) are available at Credo and Goongarrie at a cost of \$250 for exclusive occupancy only. Signs will be installed to indicate to other campers.
	School age children under 16 – \$2.00	
	Concession – \$6	

Camping

Charges Camping (basic facilities including toilet, barbecue and table). No access to power. Remote camping is free of charge.

Goongarrie Jaurdi Mt Elvire Credo	\$7 per adult	Please note: There are no inside cooking facilities provided. No firewood is provided, Please provide your own and DO NOT collect firewood in the vicinity of the homestead. Rainwater is seasonal and not reliable. Please bring your own supply of water to all stations.
	School age children under 16 – \$2.00	
	Concession – \$5	

our environment our future

Personalized names on
APLA shirts

Not only shirts but towels
and other Manchester.

Towels with name and design
range from \$25 to \$35.

Most designs are done on set
sizes 100cm x 100 cm and 180cm
x 130cm.

Loads of different designs

Call Linda on 0409971438



**Borders are open! Need some signage
for your Vehicle or lease.**

WARNING
AUDIO and VIDEO
SURVEILLANCE
IN USE
ON THIS LEASE



Call Steve: 0498 353 232

Datum Post Advertising Costs 06/11/2019 to a targeted
prospecting audience of 2000+ members
All artwork must be provided to the Editor.

	Member	Non Member
Full Page Add	\$200	\$400
½ Page Add	\$120	\$220
¼ Page Add	\$80	\$140
Business Card	\$60	\$120

Please send all artwork to the editor
aplanews@apla.com.au

Cost is per issue. There are 6 eNews published annually.

DISCLAIMER: The Datum Post takes no responsibility for articles or advertising material published in its Newsletter. Opinions expressed are those of the original authors and do not necessarily reflect those of the Editor or the association. Persons acting on any article or advertising published in The Datum Post do so at Their own discretion.

NEXT ISSUE OF THE DATUM POST is May 28th, 2021
Cut-off date for advertising , articles, members photos 18th May.

EDITOR contact: aplanews@apla.com.au

Steve Palmer 0498 353 232