



The Datum Post

this issue

Presidents report P3

Industry News P5

Branch News P10

The "clock is stopped" P13

eNews of the



**Representing Prospectors
Since 1904**

DO

Remember safety in the bush is paramount, make sure your radio, GPS and PLB are working correctly before venturing out.



Flagstaff goldmine 1900 Coolgardie
pic courtesy State Library

APLA ASSOCIATION CONTACT DETAILS:

State Delegates- admin

President. James Allison pres@apla.com.au
Secretary. Steve Palmer sec@apla.com.au
Treasurer. Marise Palmer treas@apla.com.au

Branch Officers of APLA Perth Branch

President. Greg Young perpres@apla.com.au
Secretary. Sue. McKenna persec@apla.com.au
Treasurer. Brad Mitchell pertres@apla.com.au
Delegates James Allison,
Marise Palmer, Steve Palmer

Albany Branch

President. Gerry.Gregson albanypres@apla.com.au
Secretary. Michael McCaffery albanysec@apla.com.au
Treasurer. Bruce Smith albanytres@apla.com.au
Delegates. Noleen Smith,
Gerry Gregson albanyde1@apla.com.au

Goldfields Branch

President. Tim Bates goldfieldspres@apla.com.au
Secretary. Robert Laing goldfieldssec@apla.com.au
Treasurer. Annie Laing goldfieldstreas@apla.com.au
Delegates. Julie Bradley,
Ziggy Wolski,
Lindsay Stockdale goldfdel3@apla.com.au
goldfdel2@apla.com.au
goldfdel1@apla.com.au

Mandurah Branch

President. Alan.Branchi manpres@apla.com.au
Secretary. Bob.Wilson mansec@apla.com.au
Treasurer Amanda Holmes mantres@apla.com.au
Delegates John Krokosz mandel3@apla.com.au

Southwest Branch

President. Tom Cousins swpres@apla.com.au
Secretary. Judith.Smith swsec@apla.com.au
Treasurer. Jo Barber swtres@apla.com.au
Delegates. Judith Smith,
David Birch

APLA is made up of individual members in 5 Branches throughout the State of WA.

It can only run as effectively as its input from those members.

Volunteers are needed for the position of Technical Adviser and Datum Post Editor.

If you feel you have the qualifications to fill one of these positions call sec@apla.com.au.



**APLA
NEEDS
YOU**

From the President's Desk, Feb 2022

In December 2021 APLA had a meeting with the Mines minister, Hon. Bill Johnston MLA, and discussed the proposed diversification lease and how it will affect prospectors, lease holders and small mine operators in WA. The minister advised that the proposed lease was mainly directed at the new hydrogen industry whereby companies can co-exist with pastoral lease holders. APLA sought confirmation that there wouldn't be a negative impact of the rights of prospectors and leaseholders. The minister confirmed all existing and proposed tenements would be recognized under the Mining Act and that the rights of prospectors would be protected under the current Miners Right legislation.

APLA raised concerns over the new online process for POW applications and the impact on the Low Impact Notification (LIN) process. The minister informed APLA that for a straight forward POW application there will be no human intervention and the application/ assessment process would be fully computer generated. For more complex POW application where excess tonnage permits are required, human intervention will be required and the approval process will take longer.

The minister informed APLA that he had increased the budget for DMIRS to allow for more recruitment and training of staff to fill numerous vacancies within the department. APLA advised the minister that this was a positive step forward as APLA members had been subjected to misinformation coming from DMIRS's front counters in both the Perth and regional offices.

APLA had proposed to meet with the new Aboriginal Affairs minister, Hon. Dr Tony Buti MLA, to discuss in detail several issues related to the new Aboriginal Cultural Heritage bill, and was held at Dumas house in January 2022. APLA had the opportunity to express concerns over a range of topics and came away optimistic the minister understood our issues and could see the ramifications that could occur if prospectors, leaseholders and small mine operators are penalized by the rules and regulations of the ACH bill.

APLA has sent a letter to the shadow minister for Aboriginal Affairs, Hon Vince Catania MLA, requesting a face-to-face meeting so APLA can have the opportunity to explain our concerns with the new Aboriginal Cultural heritage bill. A response is still awaiting.

Some of APLA's branches have cancelled or postponed their respective branch meetings due to venue restrictions, etc. Considering the health issues surrounding COVID-19 and the warnings issued by the chief medical officer, branches should try to hold their meetings either in a venue that offers sufficient space for social distancing or using one of the online platforms like MS Teams or Zoom. Remembering that an active branch is a great asset to both APLA as a whole and to individual members.

APLA branches need to be fully staffed with executive positions, delegates and committee members however some branches don't have a full complement of executive members which, by default, increasing the workload burden onto those holding existing positions. I encourage all members to look seriously towards their branch and ask what you can do to help your branch. Remember the old Chinese proverb "Many hands make light work" not only that but its very rewarding to see how respected APLA is seen within numerous government departments.

James Allison

APLA President

EDITORIAL

Steve Palmer. Editor

Contact: **0498353232**
aplanews@apla.com.au



From the Editors Desk

Hi members,

Well it looks like the floodgates will open 3rd March with the removal of the WA Covid border restrictions.

Remember the new rules such as masks, and distance in all areas of the Goldfields.

WA has been in the position that many Mining Companies have restricted access to their leases because of fear of worker infection and also not wishing to spread covid to remote Aboriginal Communities in the area. One assumes since travel both within Australia and International travel is now permitted in WA, this will change.

Another interesting point, will office workers move back into the city centre or have business found that staff working from home has operated quite well over the last few years? .

APLA FB page has been changed from public to private recently with 2 new Admin added. This means a closer watch can be placed on the page to eliminate any adverse comments and also supply members with greater information. The page is now members only. You have to be a member of APLA to join and answer all questions on admission. This is your page. Please remember any questions answered by members should be checked and if you have any doubts contact the APLA Exec for further info. An immediate reply from the Exec may not be forthcoming as this is a volunteer association and questions after 6pm will usually be answered next day.

Check your local branch on the APLA web page as there are free camps being organized, free training and the Sth West branch is organizing an open day for the 27th March.

Steve Palmer

Positions Vacant

The Datum Post Editor

The current editor of the Datum Post is moving on. Are there any aspiring authors, editors, or writers out there who would like the position of Editor?

The person filling the position is paid an honorarium, is given pretty much a free hand on content and great support from members regarding input of articles.

The Datum Post is now an E news magazine therefor layout etc. is set and formulated on a computer, no longer sent to printers for publishing. The current editor is more than happy to help and support to the new applicant.

There are 6 issues a year the first issue being February and then every 2 months after.

We have a resident photographer who helps with photos of important events , AGM etc. but also provides the editor with other pictures relating to prospecting in WA.

Anyone interested in this exciting position please call the APLA secretary on 0498 353 232 or email same on sec@apla.com.au.

Gold demand hits highest level in more than two years

28 January, 2022

The World Gold Council's latest Gold Demand Trends Report revealed that annual demand (excluding OTC markets) has recovered many of the COVID-induced losses from 2020 to reach 4,021t for the full year in 2021.

Gold bar and coin demand rose 31% to an 8-year high of 1,180t as retail investors sought a safe haven against the backdrop of rising inflation and ongoing economic uncertainty caused by the coronavirus pandemic.

Meanwhile, the World Gold Council's data series reported outflows of 173t in 2021 from gold-backed ETFs as some more tactical investors reduced hedges early in the year amid COVID vaccine rollouts, while rising interest rates made holding gold more expensive.

Nevertheless, these outflows represent only a fraction of the 2,200t that gold ETFs have accumulated over the preceding five years, demonstrating the continuing importance investors place on including gold in their portfolio.

EYE ON IT

DMIRS have on the bottom of their website page a box entitled.

Subscribe to updates.

The department provides a range of newsletters and information products to keep you up to date. Subscriptions to the latest DMIRS news services of your choice are available.

They are free to the public and cover a wide range of articles and information.

Click and keep yourself informed on the DMIRS web page.

Gold price as at 20 Feb \$1,909.40

That equates to \$87.037 per gram.

Mining boom could be on the way for Australia, with record-breaking exploration spend

[ABC Pilbara](#) / By [Michelle Stanley](#)

New analysis shows Australia's mining industry is experiencing conditions similar to the boom of 2010, with record-breaking exploration spending and capital raising.

- Resources companies spent a record of almost \$1 billion on exploration in the fourth quarter of 2021
- Mining industry body AMEC says conditions are akin to the boom of 2010
- Regional Development Australia's Pilbara office says lessons have been learnt from the previous boom and bust

Total exploration expenditure hit a record \$974 million in the fourth quarter of 2021, almost double the exploration spending in the same period a year earlier.

Total capital raising also broke a record in the quarter, increasing more than 70 per cent to \$3.17 billion compared to 2020.



Gold Prospecting extract from the Yalgoo Shire

Yalgoo has a rich gold mining heritage and many prospectors venture to this out back region to experience the thrill of finding their own gold nugget.



The best times to go gold detecting around Yalgoo are through the cooler months of autumn, winter and spring.

When prospecting in Western Australia you must know your rights and obligations. Remember that under the Mining Act it is an offence to mine or explore on any land in Western Australia without appropriate authorisation and permission.

see link: dmp.wa.gov.au



Historic Paynes Find Battery. The only privately owned and operated stamp battery in W.A.

CURRENT INDUSTRY / DMIRS NEWS. cont.

Below is a report from one major gold mining company operating leases throughout WA and Canada. An interesting point is the contribution in royalties to both Australia and Canada economies \$1.8 billion.

In FY21 we produced 680,788 ounces of gold at an AISC of A\$1,215 per ounce – among the lowest cost gold producers in the world.

681 _{koz}

GOLD PRODUCED

A\$1,215 / OZ

AISC

A\$345.3 _M

RECORD STATUTORY NET PROFIT AFTER TAX

~A\$1.80 _B

CONTRIBUTION TO THE AUSTRALIAN AND CANADIAN ECONOMIES

RECORD PAYOUT OF

A\$273.4 _M

IN FULLY FRANKED DIVIDENDS

MINERAL RESOURCES

26.4 _{MOZ} – 74%

INCREASE

ORE RESERVES

9.9 _{MOZ} – 49%

INCREASE

A\$914.2 _M

EBITDA

Strong interest anticipated for next round of EIS funding

- Strong interest anticipated for next round of EIS funding
- Previous round dominated by the search for battery minerals, including nickel
- Capped values for drilling refunds have increased

Applications for Round 25 of the Exploration Incentive Scheme's (EIS) highly popular co-funded drilling program and Series 3 of the Energy Analysis Program (EAP) open today.

Explorers can receive a refund of up to 50 per cent for innovative drilling projects, with new capped values of \$180,000 for a multi-hole project (previously \$150,000), \$220,000 for one or two deep hole(s) (previously \$200,000) and \$40,000 for prospectors (previously \$30,000).

The co-funded EAP offers an up to 50 per cent refund for up to \$50,000 per application.

The co-funded drilling program encourages innovative exploration in greenfields and underexplored areas of Western Australia, while the EAP promotes the re-analysis of existing data to better understand the State's petroleum and geothermal systems.

Comments attributed to Mines and Petroleum Minister Bill Johnston:

"The McGowan Government recognises that ongoing exploration success is essential for the sustainability of Western Australia's resources sector. The increased funding caps will help resources companies further mitigate the costs and risks associated with exploration drilling.

"WA competes with several other jurisdictions to attract exploration investment so we will continue to support programs that provide the State with competitive advantages in this area.

"Most recently, Maximus Resources successfully completed drill holes demonstrating a strong potential for high-grade gold mineralisation and Karora Resources encountered significant nickel intersections - thanks to the EIS."

NOX SERIES

Unearth more buried treasure.



Whether you're detecting on land or in water, our NOX metal detector coils make it easy to cover more ground, go deeper and get into even the tightest spots. So you can discover more hidden treasures.

Fully Minelab approved and available in three sizes, they simply plug-and-play into your 600 or 800 Minelab Equinox detector.

- Fully submersible – waterproof to 3m /10-feet
- Available in 3 sizes: 10x5", 14x9" and 15"
- Fit EQUINOX 600 and 800
- 2 year warranty – register at coiltek.com.au



10x5" NOX coil
When you need to manoeuvre tight spots and detect in high trash areas, this little coil offers superior sensitivity and pinpointing ability.



14x9" NOX coil
With an elliptical shape and great depth, pinpointing and sensitivity capability, this robust coil is ideal for detecting in water and open fields.



15" NOX coil
The largest and deepest searching coil for Equinox detectors, this one's built for the serious treasure hunter. It covers more ground and detects targets other coils can't.

Want to learn and understand more about Geology.

Possibly pinpoint new gold deposits.

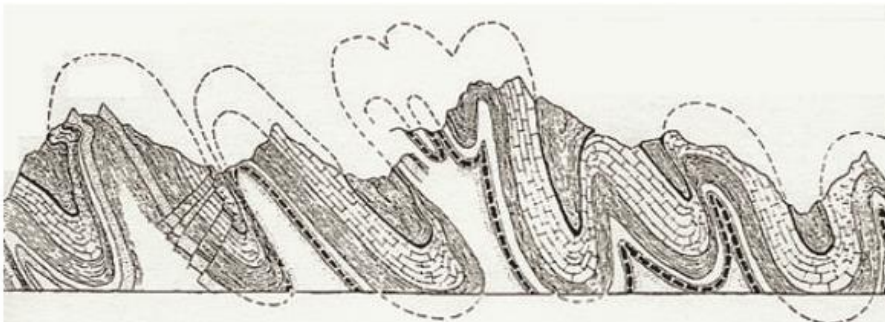
Buy Dr. B. Fagan's

UNDERSTANDING GEOLOGY ... Geology for Non-Geologists.

UNDERSTANDING GEOLOGY
Geology for Non-Geologists

Dr Robert Fagan

For PC & Mac



*A fully narrated, full colour, illustrated,
40 chapter, digital textbook in
PowerPoint Presentation format*

Web page: understanding-geology.com

This digital text or course is designed for first year geology students, prospectors, mining personnel, teachers, engineers, bureaucrats, financial analysts, journalists, corporate executives, managers and other professionals needing a full & comprehensive overview of geology, what geologists do, and how to understand & make productive use of this information.

Download-able \$US100.

With an additional 20 chapters on prospecting & small-scale mining. Activate the web page link now for more details & to download an example chapter.

BRANCH NEWS

ALBANY BRANCH

Meetings held 3rd Saturday of every second month. Each meeting consists of general Branch business and a guest speaker to assist members. Meetings are held at the Albany Men's Shed behind 77 Sanford Rd, Albany at 4pm. **Check APLA web page for any changes.**



GOLDFIELDS BRANCH UPDATE

Meetings are held at the Regency Room at the Tower Hotel Crn Maritana and Bourke st Kalgoorlie meetings on the **last Thursday of every second month.** Contact R Laing 0418 930 064 **Check APLA web page for any changes.**



MANDURAH BRANCH

Meetings held at 1.30pm, 2 Leslie st Mandurah. See APLA website for date
Meeting Dates 2022, 20 March, 1 May (AGM, Camp notice), 11 September, 13 November
January 9th 2022 meeting members are asked to bring a small plate of food for afternoon tea.
Contact Bob Wilson 0429 001 515 **Check APLA web page for any changes.**

SOUTHWEST BRANCH

Meetings Fourth Wednesday of every Second Month at the Capel Golf Club at 7:00pm - \$5 Includes Supper)
Contact Judith, SW Secretary for more information, 0428385457 **Check APLA web page for any changes.**



The following photos are of the South West Branch of APLA's final meeting of 2021. Held at the Capel Golf Club included a Roast Buffet Dinner and Hamper Raffle'



First prize Mal Mathews



Second prize Steve Adams



Third prize Mike Morley



President Tom Cousins addressing the meeting



Tom, Jo and Judith drawing the raffle

SOUTH WEST BRANCH FIELD DAY.

Date Sunday 27th March 2022 Time 10-3pm

(Note change of venue)

Bunbury Kart Club Grounds, SW Highway Bunbury.

- Guest speakers,
- Competitions
- Trade stands
- Raffles,
- Bring your own detectors to try on the test targets.

Contact : Judith, SW Secretary for more information, 0428385457

PERTH BRANCH UPDATE

APLA Perth Branch is conveniently located for Perth Members and now meets in the WA LAPIDARY AND ROCKHUNTING CLUB.31-35 GLADSTONE ROAD, RIVERVALE WA. **Check APLA web page for any changes.**

Contact Sue McKenna 0419 646 656

Perth Branch had 2 Training days for members recently. This free training was presented by DMIRS staff to improve members use of Geomap and Tengraph web. Both courses proved popular with a full house and enthusiastic members. Again these courses were organized by APLA volunteers in their "spare time" , particularly Perth president Greg Young and Secretary Sue McKenna.

FURTHER FREE TRAINING OPEN TO ALL APLA MEMBERS

**APLA GPS & NAVIGATION TRAINING DAY
OPEN to all financial members
NO COST**

Date: Tuesday, 8th March 2022
Venue: Gwelup Lake Reserve, Huntriss Road, Karrinyup
Time: 10.00 am to 1.00 pm
Facilities: Toilets and ample parking

Members willing to participate are to email Sue McKenna at aplapersec@outlook.com **no later than 3rd March 2022 advising of your attendance.** Also required for catering

Assessment Timeframes for Mining Environmental Applications, granting Mining Proposals and Program of Works.

There has been a lot of discussion over the past years about how long it takes DMIRS to process Mining Proposals (MP's) and Programmes of Works (PoW's).

Following are a few facts.

In 2020-20 DMIRS received 3686 applications in 2020/21. 3244 Programmes of Work and 324 Mining Proposals were finalised. That left 120 applications on hold for various reasons(NT, Environmental etc)

When an event occurs outside of the direct control of DMIRS , the **“clock is stopped”** and the processing time is put on hold.

“Stop the Clock “events include but not limited to.

Requesting further information from the proponent. (this can be as much as 30% of the applications having to be returned to the proponent for further information)

Referring applications to other agencies for advice in accordance with administration agreements or legislative obligations. (EPA, DWER etc.)

Awaiting grant of tenure.

It appears on looking at to statistics that over 30% of “stop the clock” is requesting more information from the proponent.

Therefore, check your paperwork before submission.

Some agencies that are inevitably involved in processing MP's and PoW's which are outside DMIRS control are.

DBCA. . Dept of Biodiversity, Conservation and Attractions

DWER. .Dept of Water and Environmental Regulation.

EPA. .Environmental Protection Authority of WA.

DPLH. .Dept of Planning, Lands and Heritage. (NT and Aboriginal Heritage sites).

Other agencies can also become involved again putting processing outside the scope of DMIRS.

So, as you can see the blame does not necessarily fall where you thought.

APLA over the years has persistently discussed with DMIRS how the process of granting MP's and PoW's can be speeded up.

DMIRS has attempted and improved their Departments operations and cooperation between other agencies is ongoing.

For further information on this DMIRS Assessment Analysis, ref to the APLA web page “Industry News and Issues”

Many of our members still ask what APLA offers and represents in Western Australia.

Below are a few reasons why everyone who prospects in WA should be a member of APLA.

- WA has some of the best ground in Australia (if not the world) for prospecting and keeping that ground available to prospectors and mining is an ongoing battle.
- APLA is a volunteer Not for profit Association that represents Prospectors and Leaseholders of WA in fighting for our rights as prospectors and leaseholders – it is not just another metal detecting club.

Why Join / Stay a Member of APLA:

- Do you Want to be Able to go Prospecting into the Future?
Public Liability Insurance cover included for most members.
- Only APLA Fights for your right to do that. NO ONE ELSE DOES.
- APLA Represents ALL Prospectors – Lease Holders, Full Time Prospectors Small Mine Operators, Part Time Prospectors, as well as the occasional Metal Detecting Prospector.

How:

- • 2 Seats on RICC.(Resources Industry Consultive Committee) RICC. Vets All the Legislation and Mining Act changes PRIOR to it going to the Parliament along with AMEC and the Chamber of Mines and Energy.
- • Quarterly Catch-up meetings with DMIRS Heads of Department
- • Represent Prospectors on other Committees and Bodies
- • Aboriginal Heritage and the Native Title Act
- • Consultation on the Work Health and Safety committee (Resources and Major Hazards.)
- • Environment Protection acts both Commonwealth and States
- • RERAP and RER Reducing Duplication and Reforming Environmental Regulation
- • Land Administration Act.
- • Pastoral Lands Act.
- • Monitor Aboriginal Land Councils such as Goldfields Land and Sea Council, Yandeyarra, Martu People, Yamatji Land Council

What Does APLA Do?

- Monitor Activities of various groups to try and ensure continued Prospector Access
- Great Western Woodlands
- Pastoral Lands Act. WA Pastoralist and Graziers Ass.
- The Wilderness Society
- Increasing Green Activism in Government Policy, the Media , Community Education and Industry.
- Monitor and influence Policy development from all Political Parties and Interest Group

Recent Issues:

- COVID19
- Instrumental in getting Leaseholders permission to cross Intra State Boundaries
- Instrumental in getting Refunds for 40E permits unable to be used because of travel restrictions
- Improvements to Program of Works workflow and approvals
- Mining Validation Bill – Ongoing
- Mining Legislation Amendment Bill 2020 – Ongoing
- Aboriginal Heritage Act Review and Rewrite will affect all prospectors – including recreational prospectors, and APLA has made a number of submissions on this and the first draft, and will be involved with the process trying to maintain access for ALL prospectors.
- Native Title Issues Southern and Easter Goldfields
- Pastoral Lease Holders Illegally Blocking Access to prospectors
- Water Bore rating costs
- The Gov't wanted to bring in a fee for water bores on Mining Tenements at a rate of about \$7000 per year, regardless if you were a small prospector drawing 100ltrs of water a day for communal use or a big miner, drawing millions of litres of water a day.
- APLA fought this and we got a reduced rate for small operators to either free or \$200 conditions do apply.
- In 2018 some Stations were demanding prospectors, - Leaseholders, as well as non-leaseholders to sign Access Agreements for access to stations, or to not object to a lease application, APLA fought this and won on everyone's behalf.
- In 2018, some of the old stations have been converted to Ranger Parks and prospectors where being told by ... Rangers that they couldn't prospect and had to pay fees to be there which was incorrect, and APLA took this to the relevant department and Minister and a education program was introduced for the Rangers to ensure that members rights are not infringed.
- And the list goes on

What Else Does APLA Do for Members:

- 100 Year History of fighting for Miners rights (YOU the member remains anonymous while APLA at the Exec Level fights against these Powerful Entities).
- Regular access to Mines Minister, Government Ministers, Politicians and Decision Makers when issues arise that need high power attention
- Long term relationship with DMIRS (DMP) and Access at the Highest Levels.
- Proven track record as an effective Industry Lobby Group.
- Long term relationships with DMIRS and Access at the Highest Levels.
- Widespread Recognition and acceptance in the Mining Community and Regional WA
- Bargaining Power in relation to Negotiating Members Rates and access to Commercial and Industry Concessions
- Wide Community Recognition and Respect.
- APLA's membership is a mix of Professional Prospectors and Lease holders as well as part time prospectors, and members who prospect for recreation, we do not discriminate or favour one group over the other and fights for everyone's prospecting rights

What Does the Individual Member Get?

- \$20m Public Liability Insurance while legally prospecting as an amateur, which many of the larger Mining companies require you to have before granting permission to prospect on their leases.
- Website and regular Newsletters.
- Regular News Releases to support your rights.

- Access to Mining Leases is often not allowed unless you are a APLA Member.
- A considerable pool of Experience in all relevant areas of Prospecting and Mining.
- Promoting and running free short courses and technical Training Sessions.
- Annual Membership Minelab Metal Detector Draw.
- Experienced Leadership group and structure,
- 5 Branches and free Camps run by individual Branches.
- Social and other facilities for Members.
- Access to Senior experienced members when facing difficulties like;
- Native Title Issues
- Pegging and issues with claims
- Environmental Lobby Groups
- SPL's information on Gold Leases.

As a volunteer organisation we are only as strong as our membership base, so the more members we have the louder our voice can be. Remember our volunteers offer their free time to help grow and improve APLA on a daily basis. So please show them every curtesy.





**A HUGE THANK YOU
TO OUR SPONSORS**





A big thank you to our sponsors

**MINELAB—COILTEK—ALTRONICS--NUGGET FINDER
REEDS PROSPECTING—THE PROSPECTORS PICK—
FINDERS KEEPERS—BLUEPRINT INDUSTRIES—
THE PROSPECTORS PATCH-- GOLD PROSPECTING WA.**

Personalized names on
APLA shirts

Not only shirts but towels
and other Manchester.

Towels with name and design
range from \$25 to \$35.

Most designs are done on set
sizes 100cm x 100 cm and 180cm
x 130cm.

Loads of different designs

Call Linda on 0409971438



"No, you can't drain the
spaghetti in it!"

Datum Post Advertising Costs 06/11/2019 to a targeted
prospecting audience of 2000+ members
All artwork must be provided to the Editor.

	Member	Non Member
Full Page Add	\$200	\$400
½ Page Add	\$120	\$220
¼ Page Add	\$80	\$140
Business Card	\$60	\$120

Please send all artwork to the editor
aplanews@apla.com.au

Cost is per issue. There are 6 eNews published annually.

DISCLAIMER: The Datum Post takes no responsibility for articles or advertising material published in its Newsletter. Opinions expressed are those of the original authors and do not necessarily reflect those of the Editor or the association. Persons acting on any article or advertising published in The Datum Post do so at their own discretion.

NEXT ISSUE OF THE DATUM POST is April 30th 2022

Cut-off date for advertising , articles, members photos 25th April EDITOR contact:

aplanews@apla.com.au

Steve Palmer 0498 353 232